

2026



MAPS ANNUAL REPORT 2026

MUSLIM ASSOCIATION OF PUGET SOUND
WWW.MAPSREDMOND.ORG
17550 NE 67TH CT. REDMOND, WA 98052

LEAD, SERVE,
AND MAKE A
DIFFERENCE.

TABLE OF CONTENTS

President's Letter	04	Education Report	42
COO's Letter	13	Youth Report	46
MAPS-Expansion Project	14	MAPS-SBRN Report	52
Religious Report	18	MAPS-MCRC Report	59
Financial Report	22	MAPS-Ready Report	62
Facilities Report	28	MAPS-NOW Report	64
Social Report	30	MAPS-Seattle Report	66
Programs & Committees	34	MAPS-Snohomish Report	68
MAPS-IOC & Outreach Report	38	Our Team	72

MISSION STATEMENT

Establish an active Masjid, adhering to Islamic principles, with a welcoming environment, high quality services, a platform for community engagement and ideas to flourish, that brings benefits to Muslims and the wider community..

VISION STATEMENT

To inspire and foster a community that impacts the quality of life and spirituality for the individual, family and society guided by teachings of Quran and Sunnah.



**Muslim
Association
of Puget Sound**



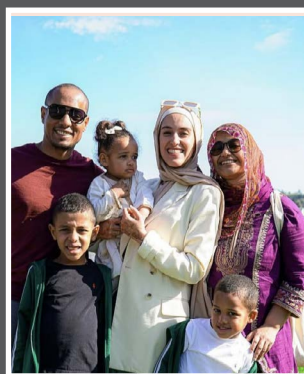
MUSLIM
ASSOCIATION OF
PUGET SOUND

Welcome
to our
Year...



ABOUT US

Muslim Association of Puget Sound, MAPS, is an Islamic organization founded in 2006 with the intent of serving the Muslims of Puget Sound. MAPS strives to build links between Muslim families, businesses and organizations, provides year-round activities and religious services and is committed to helping the needy.



THIS IS US

MAPS



PRESIDENT’S LETTER

A PERSONAL MESSAGE FROM PRESIDENT MOHAMMED VAKIL

I pray this message reaches you and your families in the best of health, peace, and the highest of Imaan.

As we come to the close of another remarkable year, I want to pause and reflect with gratitude on what Allah (SWT) has enabled our community to accomplish in 2025. This year has been about laying strong foundations — not only in bricks and mortar, but in leadership, governance, programs, and community culture — so that MAPS can continue to serve generations to come, Insha’Allah.

EXECUTIVE LEADERSHIP & ORGANIZATIONAL MATURITY

One of the most important milestones this year was the hiring of MAPS’ first Chief Operating Officer, Br. Mahmood Khadeer.

As MAPS enters a new phase of growth and complexity, the Board recognized the need for dedicated executive leadership focused on execution excellence and operational rigor. In his role, Br. Mahmood oversees our expansion project, operations, human resources, and operational staff across branches.



Since joining, our COO has helped significantly strengthen:

- Financial discipline and operational controls
- Human resources systems and staff support structures
- Cross-functional coordination across expansion, programs, and facilities
- Governance processes and policies that enable scale without losing our community-centric culture
- Hiring of Community Services (MCRC) new Director, Sr. Gul Siddiqui to continue building on the legacy of Sr. Nickhath Sheriff, who has moved on after leading it for over a decade

Internships program in Summer

During Summer 2025, MAPS interns delivered tangible operational and strategic impact across community engagement, finance, and communications. Key outcomes included launching a digital community feedback system for Friday Khutbah, building automated financial dashboards and budgeting tools to improve transparency and decision-making, and strengthening MAPS’s social media presence through audits, event coverage, and content strategy.

This role has been a major step forward in institutionalizing MAPS and ensuring that our rapid growth is matched with professionalism, accountability, and ihsaan in execution.

EXPANSION PROJECT UPDATE – FROM VISION TO REALITY

Alhamdulillah, after years of planning and du’a, we officially closed on the purchase of our new campus on April 10, 2025. This was a historic milestone for MAPS and a testament to the trust and generosity of our community.

Since closing, the team — led by our COO and supported by the Board and expansion committee — has made meaningful progress, including:

- Initial conceptual design work in collaboration with architects
- Site surveying, feasibility studies, and early engineering assessments
- Engagement with condo marketing and sales consultants
- Laying the groundwork needed to advance toward permit-ready designs

While there remains a significant amount of work ahead, we are now firmly on a path that moves us from aspiration to execution.

Equally important, we have begun sharing the expansion of vision, early designs, and fundraising strategy through community town halls and smaller gatherings. Your early feedback has already helped shape thinking around campus flow, program spaces, and community priorities. This engagement will continue as we refine the design and move into subsequent phases.

EDUCATION & RELIGIOUS PROGRAMMING

Education and spiritual growth continue to be at the heart of MAPS’ mission, and this year reflected strong momentum across age groups.

- PNW Seminary began its second year with over 150 students, a strong increase from last year, across multiple classes and disciplines. We are deeply encouraged by the seriousness and commitment of our students and instructors.

PRESIDENT’S LETTER (CONT.)



2,500
FAMILIES WERE GIVEN
FOOD AND GAS ASSISTANCE

- We hosted 50+ youth camps over the summer, covering a wide range of religious, character-building, and contemporary topics — including sports-based programs that resonate strongly with our youth.
- Our community benefited from daily khatiras after Isha prayers, along with weekend Fajr halaqas, fostering consistency in spiritual nourishment.
- Friday Family Night programs continued regularly, bringing in both local and national speakers who addressed Islamic foundations alongside modern challenges facing Muslim families today.
- We have established regular Khutbah training workshops for new khateebas as well as started a feedback program on all khutbas for continuous improvement for our current khateebas.

These programs reflect our commitment to nurturing both faith and relevance, rooted in tradition while engaged with the realities of our time.

SOCIAL PROGRAMMING & OUTREACH

MAPS also continued to be a place of connection, belonging, and outward engagement.

- We celebrated Eid in public spaces — at Redmond Town Center and Kirkland Downtown Park — welcoming the broader community to experience the joy, culture, and values of our Muslim community.
- Our annual summer family camp once again brought together families — including many new arrivals to the Pacific Northwest — helping them build friendships and lasting memories.
- Monthly community potlucks, held on the first Friday of every month, provided consistent opportunities for families and children to connect, strengthening the social fabric of our community.

These gatherings remind us that a masjid is not only a place of prayer, but a place of relationships, joy, and shared life.

COMMUNITY SERVICES (MCRC)

- Supporting families in need: In 2025, MAPS-MCRC served nearly 2,500 households through food and gas cards and 500+ households with rental assistance, helping low-income families with rental



and individuals facing food insecurity, benefit cuts, eviction risk, and economic hardship.

- Caring for health and seniors: The MAPS-MCRC clinic continued monthly in-person services, seeing 100+ patients in 2025, with plans underway to scale to a full-time clinic, while 100+ seniors regularly participated in Golden Times programs that foster connection, wellness, and dignity.

MAPS SEATTLE

- Growing programs and participation: Our Seattle campus now offers special programs biweekly alongside consistent programming four nights a week, with two Jumu’ah prayers—the first regularly reaching full capacity, reflecting strong and growing community engagement.
- Investing in the next generation: 17 students are enrolled in the Hifz program, Sunday school continues to thrive, and through our rental partnership with Wasat, additional children’s classes are now offered, expanding learning opportunities for families at the Seattle campus.

MAPS SNOHOMISH COUNTY

Program & Youth Growth: MAPS Snohomish continued to expand its educational and youth programming,

serving participants from preschool through adulthood. The youth group hosted 18 events across the year with over 25% growth in attendance, logged 80+ hours of community service, and strengthened leadership and civic engagement through consistent participation and partnerships. Youth Itekaḥ was attended by 25 participants.

Community Impact & Engagement: Through strong collaboration with local partners, including the City of Marysville and the Community Food Bank, MAPS Snohomish helped distribute food to 650+ individuals and successfully hosted an Interfaith Iftar bringing together faith leaders, first responders, and civic officials—fostering meaningful dialogue and lasting community relationships.

MAPS YOUTH

Expanding reach and engagement: This year-end quarter, MAPS Youth programs reached nearly 300 youth, with individual events drawing 80–100 participants, reflecting a steady increase in attendance compared to last year and growing trust and visibility within the community.

Holistic youth development: Through a mix of social, educational, and professional development programs—including learning workshops and a career fair—we created welcoming, youth-centered spaces that supported connection, growth, and exploration of future career paths also.

MAPS PROGRAMS



MAPS-IOC
Brings together people of all faiths and backgrounds to create bonds of friendship, through hospitality, social events and education about MAPS, Islam and Muslims



MAPS-MCRC
Supports the greater good of the Puget Sound community through financial, physical and spiritual support



MAPS-NOW
Sponsors wildlife and nature through working to clean up the outdoors, planting native species and providing trail maintenance



MAPS-READY
The safety committee that holds drills, provides resources and suggests policy on safety for the facility and the congregation



MAPS-SOCIAL
Provides workshops, classes and events to engage in the arts and showcase/share local talent



MAPS-YOUTH
Gives our youth (ages 13+) space to explore through social, religious and educational events and volunteer opportunities



MAPS-SUMMIT
Seattle-based community focused on nurturing spiritual growth and strong bonds among young adults and professionals (20+)



MAPS-MUHCEN
Creating an inclusive community by improving masjid accessibility and advocating for individuals with disabilities.



MAPS-SBRN
Provides assistance through resources, opportunities, training, technical help and other services for small business owners and non-profits in our community



GRATITUDE & LOOKING AHEAD

None of this would be possible without the dedication of our volunteers, staff, scholars, donors, and families who consistently show up with sincerity and generosity. Your trust is an amanah that we do not take lightly.

As we look ahead, the coming year will require continued patience, unity, and support — particularly as we advance the expansion project and scale our programs responsibly. I humbly ask for your continued du’as, engagement, and financial support so that MAPS can remain a source of benefit for our community and a beacon of faith, service, and excellence.

ANNUAL BANQUET – MAPS AT 20: WITH GRATITUDE, BUILDING THE FUTURE

I also warmly invite you and your family to join us for our Annual Fundraising Banquet on Saturday, February 7, 2026, at 6:00 PM, inshaAllah. This special evening will be a time for our entire community to come together to reflect on what Allah ﷻ has enabled us to accomplish, to celebrate our shared journey, and to renew our collective commitment to the vision and goals ahead. As we look toward an exciting year with much planned, our success remains rooted in our unity, resolve, and continued support of one another.

HOW TO DONATE:

- Online:** Visit our [donation page here](#) to make a secure online donation
- Text Message:** Text “Give to 425-654-2989 (Store number in your contacts as “Give MAPS”)
- Paypal or Zelle:** Send to donations@mapsredmond.org
- Stock and ACH:** Contact finance@mapsredmond.org
- Check:** Mail to: P.O. BOX 2976 Redmond, WA 98073
- Via Fidelity Charitable Trust (Donor Advised Fund):** Specify “Muslim Association of Puget Sound

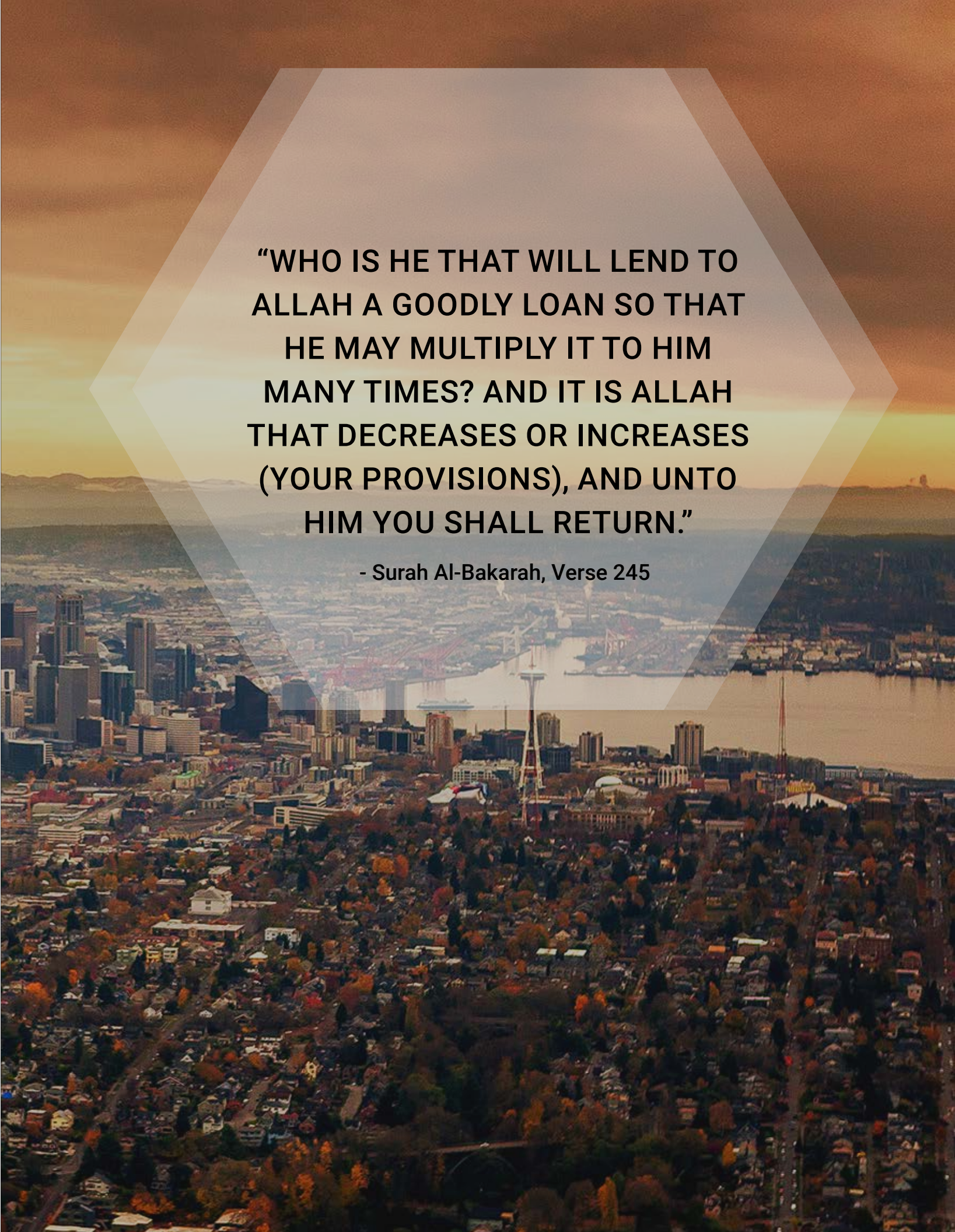
May Allah (SWT) accept from all of you, place barakah in your wealth and time, and allow us to build institutions that are pleasing to Him and beneficial to His creation.

JazakumAllahu khairan for your continued trust and support.

Was-Salamu Alaikum Wa Rahmatullahi Wa Barakatuhu,
Mohammed Wakil
President, MAPS

“WHO IS HE THAT WILL LEND TO ALLAH A GOODLY LOAN SO THAT HE MAY MULTIPLY IT TO HIM MANY TIMES? AND IT IS ALLAH THAT DECREASES OR INCREASES (YOUR PROVISIONS), AND UNTO HIM YOU SHALL RETURN.”

- Surah Al-Bakarah, Verse 245





COO'S LETTER

A PERSONAL MESSAGE FROM COO, MAHMOUD KHADEER

Dear MAPS Family and Supporters,

Serving Muslim Association of Puget Sound (MAPS) this past year has been both an honor and a responsibility. Behind every prayer, every lesson, and every gathering of community lies unseen work—careful planning, difficult decisions, and a deep commitment to amanah. I share this reflection on what your trust has enabled.

REFLECTIONS ON OUR PROGRESS (GUIDED BY FAITH AND RESPONSIBILITY)

Guarding the Trust (Amanah)

We took deliberate steps to protect the spaces entrusted to us—reducing safety and operational risk so MAPS facilities remain secure places of worship, learning, and community.

Acting With Balance (Mīzān)

As costs rose, we exercised discipline and restraint—strengthening financial oversight so every dollar is honored and directed toward genuine impact.

Planning With Wisdom (Hikmah)

The MAPS Expansion moved from intention to structure—grounded in phased planning, legal clarity, and feasibility—so growth proceeds with patience and responsibility.

Strengthening Consultation (Shūrā)

We improved decision clarity, workflows, and coordination across staff, board, and advisors—so responsibility is shared and trust preserved.

Leading With Truthfulness (Sidq)

We committed to honest communication—acknowledging constraints, managing expectations, and choosing consistency over spectacle—believing that barakah follows sincerity.



This year, MAPS chose strength and foundation over shortcuts. We invested in what protects the Ummah today and prepares it for tomorrow. These efforts may not always be visible, but they are foundational—ensuring MAPS remains stable, trustworthy, and worthy of the community it serves.

Because of you—our donors, volunteers, staff, and supporters—MAPS stands on firmer ground. Safer. More disciplined. More prepared. This progress is the result of shared belief that institutions rooted in faith must also be built with excellence.

A CALL TO CONTINUE THE TRUST

The journey ahead remains significant, difficult and full of complexities. But it is a journey worth taking—together. Your continued support is not merely a donation; it is participation in a trust that extends beyond us and, by Allah's permission, beyond our lifetimes. We invite you to give generously, with confidence, and with the intention of lasting impact.

May Allah (swt) accept this effort, place barakah in it, and allow MAPS to remain a source of light for generations to come.

With gratitude and responsibility,

Mahmood Khadeer
Chief Operating Officer
Muslim Association of Puget Sound (MAPS)

MAPS-EXPANSION PROJECT

In a major milestone, MAPS successfully acquired Microsoft Buildings B & C, a 5-acre campus — more than double the size of the current MAPS footprint.



“The scale and diversity of MAPS programming can no longer be supported by a 40,000 sq. ft. facility originally designed for a much smaller community. Expansion is required not for ambition, but for mission continuity.”

EXECUTIVE SUMMARY

The MAPS Expansion Project represents one of the most significant and visionary undertakings in the history of the Muslim Association of Puget Sound. It is a response to sustained community growth, capacity constraints, and a generational responsibility to build a permanent, dignified, and future-ready Islamic institution in the Pacific Northwest.

MAPS has outgrown its current facilities. With more than 7,000 families served annually and sustained growth of approximately 20% year-over-year since 2020, existing campuses are operating beyond practical and spiritual capacity — particularly during Friday prayers, Ramadan, youth programming, and educational activities. Temporary solutions are no longer sufficient. The Expansion Project is designed to meet this reality with permanence, foresight, and financial responsibility.

This initiative is not merely a construction project. It is a long-term institutional strategy to secure MAPS’ mission for the next 50 years and beyond.

- Strategic Rationale: Why Expansion Is Necessary
- Community Growth and Capacity Constraints

- MAPS currently serves over 7,000 families across multiple campuses
- Growth has averaged ~20% annually since 2020
- Prayer halls, classrooms, and event spaces are fully utilized every week
- Youth, women’s, and educational programs face persistent waitlists
- Ramadan operations rely on temporary and costly tent infrastructure

The scale and diversity of MAPS programming can no longer be supported by a 40,000 sq. ft. facility originally designed for a much smaller community. Expansion is required not for ambition, but for mission continuity. Our Current expansion goal is to have 3X capacity in all aspects subject to financing, feasibility design and costs constraints

GENERATIONAL RESPONSIBILITY

The Board and leadership view this project as a trust (amanah): to build not only for today’s congregants, but for future generations of families, youth, and institutions that will rely on MAPS as a regional anchor.

VISION AND PROGRAMMATIC OUTCOMES

The expanded MAPS campus is envisioned as a purpose-built Islamic and community hub that enables spiritual growth, education, service, and engagement at scale.

Key outcomes include: - A permanent, state-of-the-art masjid with adequate prayer capacity - Intentionally designed women-centered and youth-centered spaces - Full-time Islamic education and seminary pipeline - Health, counseling, and social services delivered under one roof - Facilities capable of supporting Friday and Ramadan needs for decades - An interfaith and civic engagement presence befitting MAPS’ regional role.

The project transforms MAPS from a capacity-constrained organization into a sustainable, multi-generational institution.

SITE ACQUISITION AND FOUNDATIONAL PROGRESS

Microsoft Campus Acquisition

In a major milestone, MAPS successfully acquired Microsoft Buildings B & C, a 5-acre campus—more than double the size of the current MAPS footprint. The acquisition was completed for approximately \$29 million, financed through a combination of Islamic financing and internal funding.

The campus currently generates approximately \$2.4 million in annual rental income through Microsoft leases extending through 2027, providing a strong financial base while development progresses.

GOVERNANCE AND LEADERSHIP STRUCTURE

- Dedicated MAPS Expansion Core Team established
- Board-level oversight and governance frameworks implemented
- Professional owner-representation and development management engaged

This structure ensures accountability, transparency, and disciplined execution.

PROFESSIONAL PARTNERSHIPS AND DUE DILIGENCE

MAPS has engaged a comprehensive team of nationally and regionally recognized professionals, including: - Lead architectural and design partners - Local land-use, civil, traffic, and environmental consultants - Pre-construction and cost-analysis specialists - Financial feasibility and capital-markets advisors - Legal counsel for nonprofit, real-estate, and regulatory matters

A detailed **feasibility study** is underway, encompassing: - Traffic and parking analysis - Massing and zoning evaluation - Geotechnical and environmental assessments - Civil and stormwater engineering

This diligence phase is foundational to responsible phasing and cost control.



FINANCIAL AND FUNDING STRATEGY

The Expansion Project is built on a **diversified, values-driven, and Shariah-compliant funding model**, designed to protect the masjid and reduce long-term financial risk.

Funding sources include: - Community fundraising and pledged contributions - Shariah-compliant Islamic financing - Grants and public/non-profit funding opportunities - Strategic residential condominium development

A core principle guides this model: The commercial and condominium components exist to protect and fund the masjid and community center — not the other way around.

This approach reduces dependency on perpetual fundraising while preserving MAPS’ mission integrity.

PHASED EXECUTION TIMELINE (DIRECTIONAL)

Given the scale and complexity of the project, execution is planned in clear, disciplined phases:

- Phase 1:** Feasibility, design development, approvals, fundraising and financing
- Phase 2:** Residential development and long-term sustainability components
- Phase 3:** Construction and delivery of the masjid and community center

While exact dates remain subject to permitting, financing, and market conditions, the leadership team is focused on ensuring that community impact—particularly the masjid—is prioritized in decision-making. All efforts will be made to realise the main goal of building a masjid and community center

RISK MANAGEMENT AND OVERSIGHT

The Board and management recognize that this is a bold and complex undertaking. Key risks include capital intensity,

regulatory approvals, market conditions, and execution complexity.

Mitigation strategies include: - Professional development and construction oversight - Conservative financial modeling and phased commitments - Transparent communication with the community - Continuous Board engagement and governance review

Strong leadership and disciplined execution remain central to managing these risks.

COMMUNITY ENGAGEMENT AND CALL TO ACTION

The MAPS Expansion Project is a collective endeavor. Community involvement remains essential through: - Du’a and spiritual support - Constructive feedback and expertise - Fulfillment of pledges and financial contributions - Participation in long-term sustainability initiatives


With Allah’s permission, this project will establish a lasting legacy—strengthening faith, service, and community for generations to come.

LEADERSHIP REFLECTION

MAPS leadership view the Expansion Project not simply as a construction initiative, but as a defining institutional moment. Our community has reached a scale where incremental fixes are no longer responsible. We are compelled—by growth, by trust, and by amanah—to think in decades, not years.

This project reflects a deliberate choice: to invest early in permanence, dignity, and sustainability rather than defer difficult decisions to the next generation. Every major decision has been guided by a single principle—protecting the masjid and the mission while exercising financial discipline and transparency.

We are proceeding thoughtfully, professionally, and with humility. The path is complex, and the responsibility is significant. Yet with Allah’s help, strong governance, and continued community partnership, this expansion will stand as a lasting legacy—one that strengthens faith, service, and unity for generations to come.



146,000 Sq Ft

New Campus

The new VIBE campus is three times the size of MAPS’ current facility, providing ample space for growth.

7000

Muslim Families Served

MAPS continues to support the cradle-to-grave spiritual needs of 7,000 Muslim families in the Pacific Northwest.

7.6 Acres

of Prime Land

The campus sits on a strategically located 7.6-acre property between Bellevue and Redmond.



The following report highlights our religious initiatives conducted in 2025 with the purpose of fostering community growth and bringing our community and youth closer to their deen. The report showcases key programming achievements, such as Friday evening talks, and Ramadan initiatives, while outlining goals for the upcoming year to continue strengthening our community's spiritual engagement.

RELIGIOUS REPORT

FRIDAY NIGHT EVENTS

- Successfully organized regular community events on Friday evenings featuring both local community members and invited guest speakers, fostering continued growth in knowledge, engagement, and shared experience.
- Number served: 2000+
- Impact highlight: Inspired learning, dialogue, and deeper community engagement through educational and social programming.

GUEST KHATEEBS AND SPEAKERS

- Regularly invite guest speakers and khateebis to promote and foster continued growth in knowledge, engagement, and shared experience for thousands of community members.
- Speakers invited: Br. Hussam Ayloush, Sh. Saad Tasleem, Br. Hamzah Henshaw, Ustadh Ubaydullah Evans, Sh. Adnan Wood-Smith, Sh. Sh. Abderraouf Alkhawaldeh, Sh. Ifdal Yusuf, Br. Munir Iqtish, Imam Fayaz Nawabi, Shaykh Waleed Basyouni.

FAJR CLUB

- Created a consistent space for youth to strengthen their spiritual growth while building meaningful community through shared worship and connection.
- Number served: 150
- Impact highlight: Fostered early spiritual development and a sense of accountability and community among youth participants.

JUMAA

- This year, we continued to successfully hold eight khutbahs per week across our three locations, Redmond, Seattle, and Snohomish, including our Youth Khutbahs. This achievement would not have been possible without the dedication and efforts of our volunteer khateebis, Br. Anas Azeemi, Br. Hassan Hatem, Br. Faris Khan, Br. Alaa Badr, Br. Munir Iqtish, Br. Sherief Yusuf, Br. Monem Salam, Sh. Yahya Sufi, Br. Ahsen Nadeem.



DAILY PRAYERS AND KHATIRA

- This year we continued to provide our 5 daily prayers lead by Sh. Aslam, continuing to emphasize the loud (Jahri) prayers at Fajr, Maghrib, and Isha. Additionally, Sheikh Adam has continued to lead Salah-related activities such as evening reminders after evening prayer's. During Ramadan Sheikh Adam gave a daily khatirah after 4 rak'ah of Taraweeh to talk about the meaning of what had been recited. Additionally, we completed the full recitation of the Quran this year by continuing the recitation in the Qiyam-ul-layl prayers. These efforts have continued to increase engagement, and increase our community in their Islamic knowledge.

KHATEEB WORKSHOP

- This year we continued to provide out Khateeb Workshop including 2 sessions with a total of over 40 attendees who presented to the Imams and had an opportunity the expand their training. We have two sessions scheduled for 2026, and aim to continue throughout the coming year.

GOALS FOR NEXT YEAR

In 2026, we aim to continue providing our Khateeb workshops to train and expand our community's knowledge, specifically, we hope to include more opportunities for attendees to apply their acquired skills. Furthermore, we will continue bringing our community together during Ramdan and working with our volunteers to provide Ifar and Suhoor. We look forward to continuing to provide our Khatiras, evening reminders, and put on our youth fajr club to increase community and youth engagement and further our collective Islamic education. JazakAllah Khair to those who continue to dedicate their time to making these initiatives happen.



1,691
VOLUNTEER HOURS
DURING RAMADAN



2,000+
ATTENDEES AT OUR
FRIDAY NIGHT EVENTS



18,000
IFTAR MEALS SERVED



150
YOUTH TOOK PART IN
THE FAJR CLUB



8
KHUTBAHS AT THREE
DIFFERENT LOCATIONS

PROGRAMS AT MAPS

- 1

Five Daily Prayers
- 2

Friday Prayers
- 3

Friday Family Nights
- 4

Quran study for new Muslims
- 5

Sunday Tafseer
- 6

Hadith Study
- 7

Halaqas in Arabic and English
- 8

Quranic Arabic language study

OUR VISITING SCHOLARS

Br. Hussam
Ayloush

Shaykh Saad
Tasleem

Br. Hamzah
Henshaw

Shaykh Adnan
Wood-Smith

Imam
Ubaydullah
Evans

Sh. Abderraouf
Alkhawaldeh

Imam Fayaz
Nawabi

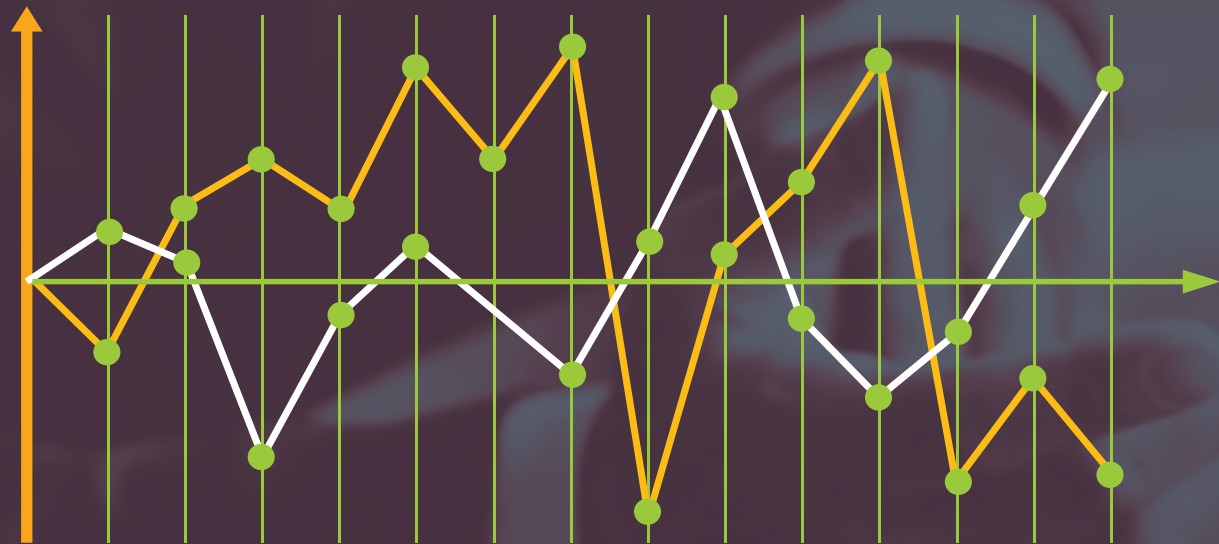
Shaykh Ifdal
Yusuf

Br. Munir
Iqtish

Shaykh Waleed
Basyouni

BUILDING A FAITH-BASED
COMMUNITY

FINANCIAL REPORT



LOOKING AT OUR YEAR



“THOSE WHO SPEND THEIR WEALTH [IN ALLAH’S WAY] BY NIGHT AND BY DAY, SECRETLY AND PUBLICLY - THEY WILL HAVE THEIR REWARD WITH THE LORD. AND NO FEAR WILL THERE BE CONCERNING THEM, NOR WILL THEY GRIEVE”

- QURAN 2:274



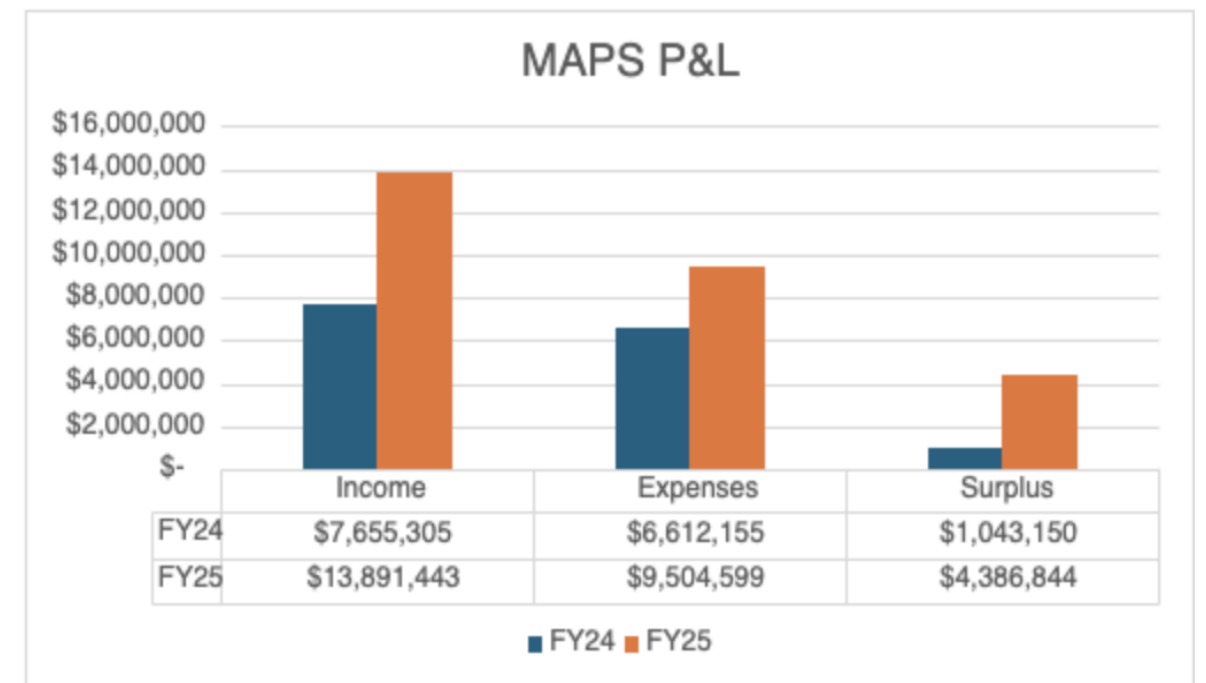
A MESSAGE FROM THE FINANCE TEAM

We are profoundly grateful to our generous donors, may Allah swt accept your donations and reward you abundantly in this life and Hereafter. Your unwavering commitment in 2025 has not only sustained our core services and programs but has propelled us toward a historic milestone: the closing of our new campus.

This year was defined by strategic expansion. Through your support, we have strengthened our financial foundation, ensuring that we can meet the growing needs of our community while investing in a permanent future for our organization.

2025 FINANCIAL HIGHLIGHTS

In 2025, we achieved a significant financial breakthrough, generating a surplus of \$4.3M across all campuses. This surplus is strategic, specifically to invest in our Expansion Project and secure our long-term stability.



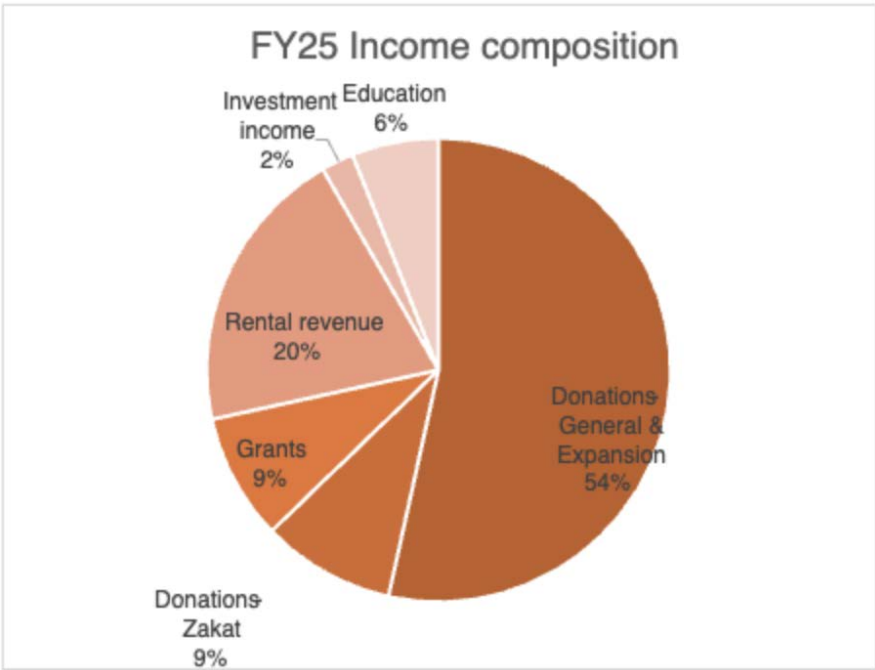
Note: 2025 financial results are preliminary and pending audit in Q1.

FINANCIAL REPORT (CONT)

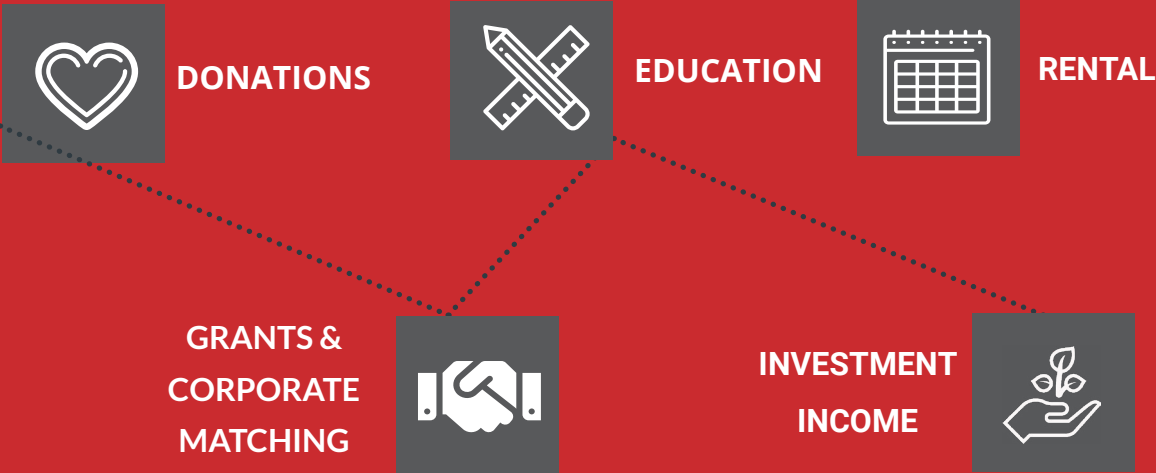
INCOME GROWTH

Total income increased by \$6.2M, an 81% increase year-over-year (YoY). This remarkable growth was driven by:

- Donations: A \$3.4M increase (84% YoY) in contributions specifically designated to support the expansion project.
- Rental Income: \$2.3M generated from the new campus lease, diversifying our revenue streams.



MAIN SOURCES OF OUR INCOME



FINANCIAL POSITION & GOVERNANCE

- Our balance sheet reflects a transformative year for the organization’s asset portfolio.
- Total Net Assets: \$12.2M.
 - > Note: This figure represents the accounting book value and does not reflect the current market value appreciation of our owned properties in Redmond and Snohomish.
- Liquidity: We ended the year with \$5.5M in cash and investments, ensuring strong liquidity for upcoming operational needs.
- Capital Projects: The \$29M purchase of the new campus was successfully funded through a \$26M Islamic financing from Stearns and \$3M in cash downpayment

COMMITMENT TO ACCOUNTABILITY

Audit: We successfully completed our 2024 financial statement audit with **Clark Nuber**, a reputable external audit firm. We have re-engaged them to audit our 2025 financial statements in Q1 2026.

Investment Management: To ensure professional stewardship of our stock portfolio in accordance with Shariah compliance, we moved our brokerage services to **Saturna Capital (portfolio manager of the Amanah mutual funds)**. We are currently finalizing a comprehensive investment policy to be rolled out in 2026.

Innovation: To meet donors where they are, we expanded our donation channels and began accepting Bitcoin in 2025.

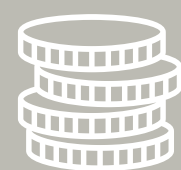
Investing in Talent: We successfully completed a finance internship program, investing in local college students to help groom the next generation of non-profit financial leaders. Our finance team capacity is expanded by current or recent university students working part-time for MAPS.



INVESTING IN OUR FUTURE



DID YOU KNOW?



\$809K+
SPENT ON EDUCATION



\$1.3MIL+
TOWARDS MAPS
PROGRAMS & EVENTS

\$1.4MIL+
SPENT ON COMMUNITY
SERVICE INVESTMENT

LOOKING AHEAD



Alhumdolillah, with a strong balance sheet, a professionally managed investment portfolio, and the acquisition of our new campus, we enter 2026 better positioned than ever to serve our mission and embark on the bold Grand Expansion Project. Thank you for building this legacy with us.

CAMPUS HIGHLIGHTS

Redmond Campus

Redmond continues to be a hub of activity, seeing YoY growth in all donation and income sources. This revenue directly funded an increasing number of programs across Community Services, Education, Ramadan, Outreach, Youth and others.

Seattle Campus

Our Seattle location saw YoY growth in both donations and expenses.

- **Strategic Surplus:** We generated a surplus of \$250k. This has been ring-fenced for the down payment on a permanent MAPS Seattle facility, a critical step as our current lease expires in March 2027.
- **Operational Updates:** Expenses increased due to necessary security enhancements, including armed security guards daily, and the expansion of our lease to include the 2nd floor to accommodate growth.

Snohomish Campus

Snohomish experienced steady YoY growth in both donations and expenses, achieving a **breakeven** financial result for 2025, meeting our operational targets for this location.

Financial Update – P&L by Location

	Redmond	Seattle	Snohomish	VIBE	Total
Income					
Donations - General & Expansion	\$6,181,408	\$974,429	\$271,832		\$7,427,669
Donations - Zakat	\$1,143,395	\$113,113	\$37,742		\$1,294,250
Grants	\$1,222,348				\$1,222,348
Rental revenue	\$453,500			\$2,337,106	\$2,790,606
Investment income	\$285,245		\$29,761		\$315,006
Education	\$770,713	\$23,886	\$46,965		\$841,564
Total Income	\$10,056,609	\$1,111,428	\$386,300	\$2,337,106	\$13,891,443
Expenses					
Operations	\$2,117,761	\$770,762	\$294,651	\$2,505,912	\$5,689,086
Community Services	\$1,452,126				\$1,452,126
Education	\$729,914	\$48,266	\$31,816		\$809,996
Programs	\$1,237,224	\$43,514	\$36,122		\$1,316,860
Others (PAT/ Skillspire)	\$235,859		\$672		\$236,531
Total Expenses	\$5,772,884	\$862,542	\$363,261	\$2,505,912	\$9,504,599
Surplus/ (Deficit)	\$4,283,725	\$248,886	\$23,039	\$(168,806)	\$4,386,844

Financial Update – Community Services, Education & Programs Expenses

Community Services		Education		Programs	
MCRC Admin	\$407,776	Education Admin	\$218,406	Ramadan	\$541,285
Housing Support	\$299,657	Precious Heart	\$150,678	MAPS Outreach and Interfaith	\$203,356
Single Women Support	\$225,611	Quran Programs	\$142,044	SBRN	\$116,455
Food Programs	\$204,839	Sunday School	\$137,709	Youth Programs	\$115,659
Funeral / Ghusel / Burial Exp	\$114,495	Other Education	\$86,098	Other Programs	\$101,632
Health Clinic	\$98,258	Summer Classes	\$24,350	Zakat ul Fitr	\$82,068
Transportation, Furniture moving	\$51,074	Scout Program	\$17,118	Eid Celebration	\$66,570
Humanitarian Services	\$26,226	PNW Seminary	\$11,465	Camp Casey	\$42,215
Golden Time (Seniors Program)	\$13,303	Urdu Class	\$8,871	Summer Camp	\$25,853
Utility Support	\$10,386	Art & Calligraphy Class	\$6,599	MAPS-NOW	\$12,300
Legal Clinic	\$500	Understand Quranic Arabic	\$6,096	Muhsen	\$9,466
	\$1,452,125	Misc	\$562		\$1,316,859
			\$809,996		

FACILITIES REPORT

EXECUTIVE SUMMARY

The year 2025 was a successful and impactful year for the MAPS Facilities Department. All major religious, community, and operational responsibilities were carried out smoothly and efficiently. The facility supported a high volume of services, events, and rentals while maintaining strong operational standards and high community satisfaction.

FUNERAL SERVICES

In 2025, MAPS successfully provided funeral services for 77 deceased individuals. All services—including ghusl (washing), janazah prayers, coordination, and facility support—were handled with dignity, care, and full compliance with Islamic and operational requirements. Feedback from families and the community remained positive throughout the year.

EVENTS AND FUNDRAISING ACTIVITIES

- Gym rentals in 2025 for personal events and external organizations were held on approximately **20 Saturdays**.
- **Old MPR:** 27 events
- **New MPR:** 21 events
- Over **52 events** were successfully hosted, including personal events and programs organized by external organizations.
- Multiple MAPS fundraising events and external organization fundraisers were conducted without incident.

Facility coordination, setup, and logistical support contributed to the smooth execution of all events.

RENTAL INCOME PERFORMANCE

- Facility rental income increased in 2025.
- Improved scheduling, higher space utilization, and better coordination with renters contributed to this growth.
- All rentals were managed in accordance with MAPS policies and guidelines.



All major religious, community, and operational responsibilities were carried out smoothly and efficiently, reflecting MAPS' commitment to excellence and service.

RAMADAN AND EID PROGRAMS

Ramadan 2025 activities, including nightly prayers, iftars, and special programs, were completed successfully.

Eid al-Fitr and Eid al-Adha prayers and celebrations were conducted smoothly with strong community participation.

MAINTENANCE AND FACILITY OPERATIONS

- All facility maintenance was successfully managed throughout 2025.
- Regular preventive maintenance, repairs, and inspections ensured safety, cleanliness, and functionality.
- Coordination with vendors and internal teams helped minimize disruptions and maintain high facility standards.

CONCLUSION

Overall, 2025 was a productive and successful year for MAPS Facilities. The department effectively supported religious obligations, community engagement, fundraising efforts,



SOCIAL REPORT

As the MAPS congregation continues to flourish, so does our commitment to fostering meaningful connections and vibrant engagement opportunities for our members and the broader community. In 2025, we made significant strides in creating dynamic and inclusive social programs for individuals of all ages.

CONTINUING & STRENGTHENING OUR SOCIAL PROGRAMS

Building on last year's growth, MAPS continued to support and strengthen our social programs and committees, including MAPS 20s (Summit), 30s, Men's and Women's Basketball, Badminton, Converts, Youth Fajr Club, and the Hackathon. These initiatives remained a vital part of community life, fostering connection, engagement, and a strong sense of belonging across all age groups, especially among our youth.



CELEBRATING COMMUNITY AND TRADITION

Ramadan and Eid Festivities

We upheld cherished traditions by hosting Ramadan iftars and Eid celebrations. Small businesses thrived at our Ramadan and Eid Bazaars, while food trucks added to the festive atmosphere on weekends and during the last ten nights of Ramadan. On Eid, over 2,000 goodie bags and free ice cream brought joy to our attendees.

Monthly Family Potlucks

Held on the first Friday of each month, our Family Potlucks provide a welcoming space for community bonding, with 30-40 attendees regularly participating.



CELEBRATING DIVERSITY AND BUILDING AWARENESS

Black History Month Dinner & Discussion

In February, our community united for a halal soul food dinner, an enlightening discussion with Imam Abdul Matin, a screening of a Black American Muslim documentary, soulful salawaat with Jaminah Shannon, and a Black Business Bazaar. This sold-out event drew 150 attendees, bringing together a diverse group to explore the experiences of Black Muslims, the importance of Black History Month, and actionable ways to be allies year-round.

World Hijab Day

In February, MAPS hosted a special women-only World Hijab Day event featuring an open house with women-led vendors, guest speakers, and interactive hijab tutorials. The program created a welcoming space for connection, learning, and celebration, highlighting the beauty, meaning, and diversity of hijab while fostering understanding and empowerment among attendees.





2,000

GOODIE BAGS GIVEN
OUT ON EID



100+

BUSINESSES SUPPORTED
THROUGH BAZAARS



300+

ATTENDEES AT THE
MUSLIM TALENT EXPO



500

ATTENDEES AT THE
FALL FESTIVAL



SHOWCASING TALENT AND BUILDING CONNECTIONS

Muslim Talent Expo

This year marked the second MAPS Muslim Talent Expo, which drew a crowd of over 300 attendees. Children showcased their gifts in Islamic art, calligraphy, poetry, nasheeds, qirat recitation, adhan recitation, skits, and more. This vibrant celebration of talent and creativity left a lasting impression on our community.

Family Summer Camp

Our annual Family Summer Camp at Camp Casey on Whidbey Island welcomed over 300 participants for an unforgettable weekend of bonfires, halaqas, sports, games, BBQs, stargazing, nature walks, and more. It was a cherished opportunity for families to connect and unwind.



CONTINUING POPULAR EVENTS

Fall Festival

Supporting home-based Muslim businesses remains a priority. Our annual Fall Festival featured over 50 vendors and attracted approximately 500 attendees, showcasing the resilience and creativity of our community entrepreneurs.

Fall Family Movie Night

This year's Fall Family Movie Night drew an impressive crowd of 500 attendees. Kids and families enjoyed a memorable evening at the masjid, complete with a film screening, free pizza, candy, board games, and other fun activities that brought the community together in a relaxed and enjoyable environment.

LOOKING AHEAD

Our social programs continue to evolve, reflecting the spiritual, physical, and emotional needs of our growing community. As we look to the future, we remain committed to nurturing opportunities for connection and engagement.

FOR ANY INQUIRIES OR TO GET INVOLVED, PLEASE CONTACT US AT [SOCIAL@MAPSREDMOND.ORG](mailto:social@mapsredmond.org)



PROGRAMS & COMMITTEES REPORT

INTRODUCTION

This year, our focus was on continuing to establish and strengthen our committees, optimizing their structure and capacity to provide relevant resources and meaningful community engagement for those we serve.

We are deeply grateful for our volunteer committee leads who continue to step up, bring fresh ideas, and generously dedicate their time and energy to our community. Additionally, none of this work would be possible without the MAPS staff, whose behind-the-scenes efforts, setting up and breaking down spaces, coordinating bookings, and maintaining our facilities, ensure our programs run smoothly and consistently.

MISSION

Our mission is:

To build inclusive and intentional spaces that meet the evolving needs of our community by fostering connection, providing support, and encouraging personal, spiritual, and social growth.

OVERVIEW OF THE YEAR

In 2025, we experienced:

- Increased frequency of programming and growing demand across several committees, including MAPS Summit, Basketball, and Hackathon.
- Intentional development of new committees preparing to launch in 2026, such as Shifaa Outreach, alongside the revival of previously retired programs, including Open Mosque.
- Leadership transitions across three committees, which challenged us to prioritize continuity, strengthen internal systems, and learn how to ensure programming remained active and responsive during periods of change.

KEY HIGHLIGHTS

- Provided over 167 event hours serving 3000+ community members
- Expanded three programs while successfully sustaining five ongoing initiatives



- Developed two new initiatives set to launch in 2026
- Hosted 72 events (6% increase from 2024), with over 3000 total attendees
- Partnered with 26 organizations
- 81% increase in volunteer registration

PROGRAM BREAKDOWN

MAPS Summit

- Created a dedicated space for young adults in their 20s to grow professionally, socially, and spiritually through a wide range of programming, including halaqahs, sports tournaments, trips, panels, and social gatherings.
- Number served: 485
- Impact highlight: Empowered young adults to build lasting connections, develop leadership skills, and engage in personal and spiritual growth opportunities.

MAPS 30s

- Fostered a strong and supportive community for individuals in their 30s. Despite a leadership transition that required retraining and temporarily reduced event frequency, the community remained highly engaged, as reflected in an active group chat where members consistently sought support, resources, and social connection.

- Number served: 306
- Impact highlight: Strengthened social support networks and reinforced a sense of belonging

Hackathon

- Hosted our first-ever Shark Tank-style showcase, elevating the Hackathon experience by giving participants the opportunity to present their ideas, receive live feedback, refine their projects, and compete for prizes.
- Number served: 40
- Impact highlight: Encouraged innovation, creative problem-solving, and professional skill development among participants. Challenged them to think of out-of-the-box solutions targeted towards helping our ummah.

Brother and Sisters Basketball

- Successfully hosted weekly basketball games that served as a platform for mentorship, relationship-building, and community connection beyond athletics, fostering both personal and professional bonds.
- Number served: 100
- Impact highlight: Built intergenerational mentorship opportunities and strengthened relationships across the community



3,000+

community members served

167+

total event hours

81%

increase in volunteer registrations

26

partner organizations



Fajr club

- Created a consistent space for youth to strengthen their spiritual growth while building meaningful community through shared worship and connection.
- Number served: 150
- Impact highlight: Fostered early spiritual development and a sense of accountability and community among youth participants.

Potluck

- Hosted a community-wide potluck on the first of every month, providing an accessible and welcoming space for members to connect and build relationships.
- Number served: 100
- Impact highlight: Strengthened social bonds and encouraged cross-community connections in an informal, welcoming setting.

Shifa Outreach

- Developed a new committee behind the scenes to prepare for a 2026 launch, with the goal of providing comfort and support to hospitalized individuals who may not have family or community present.

Open Mosque

- Worked behind the scenes to recruit committee leads and prepare for the relaunch of the Open Mosque program, with the first event scheduled for January 2026.
- Impact highlight: Revitalized a long-standing program to expand education about Islam to our friends and neighbors.

Mental Health Committee

- The Mental Health Committee worked behind the scenes to train new leads and develop a comprehensive resource packet outlining a range of social and mental health resources available to the community. The committee aims to launch this packet in 2026.

Friday Night Events

- Organized regular community events featuring both local community members and invited guest speakers, fostering continued growth in knowledge, engagement, and shared experience.
- Number served: 2000+
- Impact highlight: Inspired learning, dialogue, and deeper community engagement through educational and social programming.

PROGRAMS & COMMITTEES REPORT (CONT.)

- Speakers invited: Br. Hussam Ayloush, Sh. Saad Tasleem, Br. Hamzah Henshaw, Ustadh Ubaydullah Evans, Sh. Adnan Wood-Smith, Sh. Sh. Abderraouf Alkhawaldeh, Sh. Ifdal Yusuf, Br. Munir Iqtish, Imam Fayaz Nawabi, Shaykh Waleed Basyouni.

SPECIAL EVENTS

Summit Souk

Summit Souk was a large-scale, community-wide market organized and executed by our 20s committee. The event welcomed hundreds of attendees and showcased 26 Muslim-owned businesses, showing casing large community support for Muslim entrepreneurs.

Shark Tank

The MAPS Shark Tank was organized by the Hackathon Committee and expanded upon the 2024 Hackathon by elevating it to a competitive pitch-style event, garnering 62 participants. Participants received live feedback and the opportunity to present and refine their projects in a professional setting.

Palestine Fundraiser Tournament

MAPS Brothers Basketball hosted a fundraising tournament dedicated to supporting Palestine, successfully raising \$4,000, which was later corporate-matched to a total of \$8,000 in donations.

CHALLENGES THIS YEAR

- Navigating leadership transitions while ensuring new committee leads were trained effectively and programs remained consistent, engaged, and well-communicated.
- Balancing increased demand for programming with volunteer capacity and available resources.

GOALS FOR NEXT YEAR

In 2026, we aim to:

- Launch new committees and programs, including Shifa Outreach and Open Mosque, to meet evolving community needs.
- Expand attendance and engagement across existing programs, as well as reach Muslims in greater Seattle areas.
- Strengthen internal leadership and volunteer structures to ensure smooth transitions, continuity, and sustainability of all committees.
- Continue fostering inclusive, welcoming spaces where members of all ages can connect, grow spiritually, socially, and professionally, and contribute to the broader MAPS community.

GRATITUDE & CLOSING

Thank you to our community for your support and trust. We look forward to serving you in the coming year.



MAPS-IOC & OUTREACH REPORT

MESSAGE FROM OUTREACH & ADVOCACY CHAIR, HEND ALHINNAWI

Mashallah! What a year it's been. In 2025, I had the privilege of leading MAPS outreach during a year of meaningful growth and visibility. We strengthened relationships across King County and Washington State, deepened our presence with city, county, and state leaders, and expanded partnerships across civil society and the interfaith community. We hosted community wide programs, including Eid festivities at Redmond Town Center, that brought together Muslims and non-Muslims, showcased Islamic art at Together Center that helped build understanding, and sustained year-long advocacy in Olympia to ensure MAPS and our community are represented in the conversations that shape policy and resources. One of the most meaningful moments of the year was inaugurating MAPS 2.0 with elected officials, donors, and community members, a milestone that reflects both our progress and our long-term commitment to serving the region with faith, unity, and service.

INTRODUCTION

This year, our focus was:

Engaging diverse audiences and partners across King County and strengthening relationships with government decision-makers to deepen collaboration, and public understanding of MAPS services and programs. Through these efforts, the Outreach Team continues to position MAPS as a central pillar of community engagement and advocacy in the Pacific Northwest—grounded in faith, service, and values that guide every aspect of our work.

We are grateful for:

The continued support of our staff, volunteers, donors, interfaith partners, community members, public officials, and dedicated MAPS staff who made this work possible.



Through this anniversary year, the MAPS Outreach Team reaffirms its commitment to serving the broader community with dignity, compassion, and excellence.

MISSION

Our mission is:

To promote MAPS programs and services by fostering meaningful connections, and addressing community needs while upholding the values of faith, unity, and service.

OVERVIEW OF THE YEAR

In 2025 we experienced: Significant growth in visibility, engagement, and external partnerships through expanded outreach, advocacy, and institutional development efforts. Key developments included:

- Expanded funding streams and secured significant new resources to support MAPS programs and the campus expansion project.
- Hosted Eid celebrations in a public space at Redmond Town Center for the first time, attracting more than 8,000 attendees from both Muslim and non-Muslim communities.
- Submitted seven grant applications across Security, Capacity Building, and Early Learning Facilities, strengthening MAPS' ability to deliver integrated community services.
- Responded to growing community demand by increasing cultural, interfaith, and civic engagement initiatives.
- Strengthened MAPS' presence at the city, county, and state levels—particularly in Olympia—advocating on behalf of MAPS and the broader community.
- Inaugurated MAPS 2.0 (the new campus) alongside key elected officials, donors, and community members.

The Outreach & Advocacy Team

The Outreach & Advocacy Team plays a central role in advancing MAPS' mission to build bridges, foster understanding, and strengthen civic engagement across diverse communities.

This dedicated team oversees community partnerships, public relations, and government engagement while coordinating impactful programs and events throughout the year.

Outreach Chair – Hend Alhinnawi

Provides overall strategic direction and leadership for outreach and advocacy initiatives. Hend guides the team in aligning outreach goals with MAPS' broader vision of faith-driven service and community empowerment.

Outreach Coordinator – Safaa Aldib (new in 2025)

Recently joined the team to expand capacity in both external and internal relations. Safaa's portfolio includes event coordination, program reporting, and grants management, ensuring that MAPS' outreach efforts remain well-documented, transparent, and sustainably funded.

Government Relations Coordinator – Aya Samman

Leads MAPS' engagement with public officials, interfaith coalitions, and advocacy partners. Aya facilitates dialogue on policy issues affecting the Muslim community and represents MAPS in state-level forums.



**“The work
you’re doing for
the community
is truly
phenomenal.
May God
reward you.”**

**- Non-Muslim Resident
from Redmond.**

CHALLENGES THIS YEAR: NOT A CHALLENGE, BUT AN INVITATION

We invite the community to get involved in the work done by the Outreach team!

GOALS FOR NEXT YEAR

In 2026, MAPS marks its 20th anniversary under the theme: “Honoring Our Roots, Building the Future.” This milestone year will focus on:

- Celebrating MAPS’ legacy of service, faith, and community leadership
- Deepening engagement with long-standing supporters while welcoming new Partners
- Expanding storytelling, communications, and public-facing initiatives tied to MAPS’ history and future vision
- Advancing plans for MAPS’ comprehensive community campus, including a mosque, youth center, early learning facility, permanent health clinic, and supportive housing.

Through this anniversary year, the MAPS Outreach Team reaffirms its commitment to serving the broader community with dignity, compassion, and excellence.



KEY HIGHLIGHTS

- 01** Hosted 12 community-wide events and programs throughout the year, reaching thousands of participants across Muslim and non-Muslim communities, including activities at Redmond Lights, Derby Days, and Bellevue College.
- 02** Engaged more than 100 interfaith leaders and institutional partners through meetings, convenings, and advocacy efforts, including the MAPS New Campus Inauguration, which was attended by over 30 elected officials.
- 03** Expanded MAPS’ funding streams and submitted grant applications totaling over one million. for 2026.
- 04** Maintained a consistent year-round advocacy presence in Olympia, representing MAPS in state-level dialogue and relationship-building efforts.

- 05** Organized the Islamic Art Exhibit (February–May 2025), providing the broader public with an immersive cultural and educational experience.
- 06** Hosted two public Eid al-Fitr celebrations for the first time in Redmond and Kirkland, ensuring strong public visibility, police coordination, and broad community engagement.
- 07** Delivered more than 14 library and arts programs across King County.
- 08** Participated in community college and cultural events throughout Redmond, Bellevue, and Kirkland.

IMPACT

Expanded public understanding of Islamic culture and reinforced MAPS’ role as a cultural anchor in the region.



“Seeking knowledge is a
requirement for every
Muslim man and woman.”

– Prophet Muhammad (pbuh)

At MAPS Education, we embrace this timeless principle, ensuring that learning transcends age, background, and circumstance. This year has been a testament to our mission of cultivating intellectual, spiritual, and moral growth.



EDUCATION REPORT

INTRODUCTION

This year, our focus was:

Our primary focus this year was strengthening the financial sustainability of our programs, enabling us to both maintain and continue growing them.

We are grateful for:

We are sincerely grateful for all our teachers and volunteers who do an amazing job planning, executing, and refining every class we offer. And to the MAPS facilities team, who work tirelessly to make sure all classes and events run smoothly.

MISSION

To serve our community's educational needs by providing Islamic education in an impactful way, building confidence in their faith, and fostering their spiritual growth.

OVERVIEW OF THE YEAR

In 2025, we:

PNW Seminary: Merged Adult Education, Youth Education (previously Youth Seminary), and Understanding Quranic Arabic under PNW Seminary, and a new Program Lead was

hired to manage all administrative and logistical operations. Also, monthly Khaṭīb Workshops and Elective Seminars were launched.

Sunday School: Welcomed a new principal at MAPS Redmond Sunday School to take charge of all administrative operations.

Precious Hearts: Launched Little Blossom Bud, a year-long program geared toward nurturing the development of kids aged 2-4.

Scouts Program: Launched Boy Scouts for our older youth to provide mentorship and teach essential skills to our future community leaders. It has already seen a high demand leading to a waitlist for the program.

PROGRAM BREAKDOWN

PNW Seminary

- Provided Islamic education for youth and adults through a modern lens while keeping rooted in tradition.
- Number served: 180+ students
- Impact highlight: Strengthened class structure and quality, started offering monthly Khaṭīb Workshops and elective seminars every semester



Quran Memorization

- Students intending to memorize Quran work with our qualified instructors to accomplish this noble goal.
- Number served: 14

Rahma Quran Academy

- Introduced young learners to the foundations of reading and understanding the Quran.
- Number served: 40+ students

Sunday School

- Provided Islamic Education to our Muslim kids in a fun, engaging, age-appropriate manner
- Number served: 340+ students

Precious Hearts

- Provided children with a positive learning environment with play alongside instruction planned by staff knowledgeable in the field of child development.
- Number served: 70+ students
- Impact highlight: Launched Little Blossom Buds for kids ages 2-4

Scouts

- Aimed to create a safe space for our youth, to exercise leadership, challenge themselves, to form lasting friendships with their fellow Muslim friends, and explore God's creation in nature and the outdoors.
- Number served: 90+ students
- Impact highlight: Launched Boy Scouts for our older youth

SPECIAL EVENTS

Ramadan programs, retreats, expos, retreats, trainings, workshops.

- Summer Camp – 30+ programs offered (Attendance: 390+ students)
- Winter Camp (Attendance: 17 students)
- Monthly Khaṭīb Workshops (Attendance: 30+ students)
- Heart Detox Elective Seminar (Attendance: 50+ students)

CHALLENGES THIS YEAR

We faced challenges such as:

Financial Sustainability: In order for our education programs to remain sustainable, we needed them to turn a profit, or at least break even. This way, we are able to maintain many of the financial burdens that come with running a program, such as supplying materials, providing meals, and paying teachers. To meet this need, we instituted a small registration fee that would be paid when registering for any class. This small change helped us break even with our programs, so that we can sustain them, and eventually grow them.

GOALS FOR NEXT YEAR

In 2026, we aim to:

Increase regular program attendance by having program leads place greater emphasis on parent and student engagement.

Strengthen the teacher pipeline by expanding the use of teaching assistants (TAs) and supporting their development into lead teachers.

Improve class quality by establishing clear, organization-wide professional standards for class structure at MAPS.

GRATITUDE & CLOSING

Thank you to our community for your support and trust. We look forward to serving you in the coming year.

Contact:

Email: adam.jamal@mapsredmond.org

Social: @mapspnwseminary, @mapssundayschool



KEY HIGHLIGHTS OF 2025



48+
CLASSES &
PROGRAMS



340+
STUDENTS IN
SUNDAY
SCHOOL



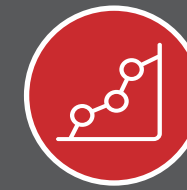
950+
STUDENTS
ACROSS
ALL EDUCATION
PROGRAMS



180+
YOUTH &
ADULT
STUDENTS
ENROLLED



6
CORE EDUCATION
PROGRAMS



4
NEW INITIATIVES
LAUNCHED



“Alhamdulillah, the PNW Seminary youth program has been a valuable part of our family's journey. Our firstborn son completed the program and graduated with a strong foundation in Islamic knowledge and character. Based on that positive experience, we enrolled our second son, who is currently attending and benefiting greatly. In shā' Allāh, we also plan to enroll our third son once he reaches the eligible age. We are grateful for the dedicated teachers and structured environment that nurture both learning and iman.”
— Umm Subhaan, PNW Seminary: Youth Parent



PROMOTING A POSITIVE YOUTH CULTURE

MAPS-YOUTH REPORT

INTRODUCTION

This year, our focus was: Empowering Muslim teens through faith, leadership, and community service while fostering meaningful connections and personal growth.

We are grateful for: Our dedicated youth officers, volunteer adult leaders, generous donors, supportive parents, MAPS administration, and the entire community who continue to invest in the next generation of Muslim leaders.

GROWTH AND PARTICIPATION

Our mission is: To create a vibrant and engaging community for Muslim teens aged 13-18, where they can flourish spiritually, socially, and academically while building lasting brotherhood and sisterhood.



311
NEW YOUTH JOINING
MAPS-YOUTH



160+
WEEKLY ATTENDEES AT
OUR FRIDAY EVENTS



100+
ENGAGED IN
LEADERSHIP, SERVICE,
AND CIVIC ACTIVITIES



60+
ATTENDEES AT OUR
ANNUAL YOUTH
RETREAT

OVERVIEW OF THE YEAR

In 2025, MAPS Youth experienced:

- Continued growth with over 300 unique youth registered throughout the year, with an average attendance of 80+ per event, maintaining our position as one of the largest and most consistent youth programs in the Pacific Northwest
- Strong gender balance with 135 brothers and 176 sisters actively participating in programming
- 116 first-time participants joining MAPS Youth from year 24/25 to year 25/26, demonstrating our expanding reach
- Robust leadership pipeline with 89 officer applications received, showing strong youth investment in program leadership Celebrating Large-Scale Events
- Hosted 12+ events in Fall 2025 alone, including socials, discussions, service events, and career programming
- Partnered with organizations including CAIR, MCRC, and local universities for impactful programming
- Maintained consistent weekly Friday events with strong attendance
- Strong sister participation representing 57% of total registrations

PROGRAM BREAKDOWN

Weekly Friday Events

- Weekly gatherings featuring Islamic discussions, social activities, guest speakers, and community building
- Topics covered: Muslim identity, navigating challenges as American Muslims, Islamic history, and personal development
- Impact: Created consistent touchpoint for youth to connect with peers and strengthen their faith

Social Events

- Corn maze outings, bowling at Bowlero Lynnwood, donuts and hangout sessions, and senior sunrise at

Marymoor Park

- Investment: Over \$4,000 allocated to social programming
- Impact: Built lasting friendships and brotherhood/sisterhood bonds in a halal, fun environment

Service & Outreach

- Partnered with CAIR for civic engagement, assembled meal packs for the homeless with MCRC, and conducted regular masjid clean-up drives
- Community partners: MAPS-MCRC, CAIR, local shelters
- Impact: Instilled values of service and giving back while making tangible differences in the community





SPECIAL EVENTS

Annual Youth Retreat: A weekend getaway with 60+ attendees featuring inspiring lectures, outdoor activities, workshops, sports, and campfire discussions. The retreat remains one of our most impactful programs for building deep connections.

Career Night

Open market-style setup with booths representing various professionals. Teens explored different career paths through direct interaction with Muslim professionals in diverse fields.

College Night at UW

Focused on college preparation, essay guidance, and application strategies for upperclassmen navigating the admissions process.

AHSEN Youth Conference: Youth participated in the regional Islamic conference, connecting with Muslim youth from across the Pacific Northwest.

CHALLENGES THIS YEAR

We faced challenges such as

- Managing capacity at popular events while maintaining quality programming and personal connections (space is too small)
- Balancing diverse programming needs across different grade levels and interests

GOALS FOR 2026

In 2026, we aim to:

- Expand programming with new initiatives including escape rooms, movie nights, projects, mosque visits, etc
- Strengthen Ramadan programming (Feb - March) with special youth-focused content and community service
- Continue emphasizing project-based initiatives that help youth discover and pursue their passions
- Develop deeper partnerships with universities and professionals for career guidance
- Grow our volunteer base to better support our expanding community of Muslim teens

GRATITUDE & CLOSING

Thank you to our community for your support and trust. As MAPS Youth continues into its 12th year, we remain committed to inspiring and empowering the next generation of Muslim leaders. Together, we will continue to build a community where young Muslims can flourish spiritually, socially, and academically.

We look forward to serving you in the coming year.

Contact:

Website: linktr.ee/mapsyouth

Instagram: @maps_youth



“If it weren’t for Maps Youth, I wouldn’t regularly be coming to the masjid. The program Ahsen has created has brought me closer to my community and given me a closer connection to Allah swt.”

- Sammy Baroud



MAPS YOUTH
FAITH • SERVICE • FAMILY

1.

DEVELOPMENT OF
A CONFIDENT
RELIGIOUS IDENTITY

2.

DEVELOPMENT OF
BROTHERHOOD
AND SISTERHOOD

3.

DEVELOPMENT OF
A SERVICE ORIENTED
YOUNG ADULT

4.

DEVELOPMENT OF
RELEVANT ISLAMIC
EXPERIENCE

INSPIRING THE
NEXT GENERATION

MAPS-SBRN REPORT

EXECUTIVE SUMMARY

In FY25, the Muslim Association of Puget Sound (MAPS) proudly served as an SBRN partner organization supporting small businesses across King, Snohomish, and Pierce Counties. We provided one-on-one technical assistance to 100+ clients, reached more than 10,000 individuals through outreach, and hosted two high-impact business fairs, each featuring 100+ vendors. Our work focused on elevating entrepreneurs in our community by connecting them with capital, training, and visibility. To date, the program has secured approximately \$200K in funding and mobilized an additional \$250K+ in grants that were disbursed directly to small businesses to help local entrepreneurs grow in FY25.

As part of this impact, 20 small businesses received \$33,500 to purchase essential business equipment, and 9 businesses received \$225,000 through the SBRL program, which was launched in FY24 and is continuing into FY26. Together, this drove nearly a quarter million dollars directly to small businesses and nearly half a million dollars in total funding toward the SBRN ecosystem in FY25.

FINANCIAL SUMMARY

Total grant funding secured in FY25 exceeds \$200K. Of this, \$122K has been secured for FY26, with the remaining \$78K committed for FY27, while we continue to pursue additional grants for FY27.

This is a major achievement—not only restoring funding for FY26*, but also securing support into FY27—helping ensure the program continues to thrive and serve our small business community through 2027 and beyond. This is especially encouraging given that our original funding was reduced by 75% at the start of the fiscal year; despite that, we were able to bring funding back to its original scale, maintain support for the coordinator, and keep the program on track to remain self-sustaining.

*Note: Washington State Commerce’s fiscal year runs from July to June.



In total In total,
we supported 20
small businesses
connected to SBRN
with grants of up
to \$4,000 each to
help them ramp up
and scale.

SBRL LOAN PROGRAM

MAPS conducted extensive outreach for the Small Business Resiliency Loan (SBRL) Program. We reached out to over 200 small businesses, particularly among vendors who had previously engaged with our programming. As a result:

BUSINESSES SUBMITTED APPLICATIONS.

- 9 businesses submitted applications.
- All 9 loans were approved, helping entrepreneurs scale, stabilize, and meet operational demands

CRP

Assigned \$33.5k grant to 20 business, testimonial below

Highlights

We disbursed \$33,750 to support small businesses through the CRP program, where SBRN partially funded equipment purchases to help businesses strengthen operations and grow.

In total, we supported 20 small businesses connected to SBRN with grants of up to \$4,000 each to help them ramp up and scale. Testimonials from several of these businesses are included in the section below:

CASE STUDIES

Testimonial : Hana's Naturals by Sana Alam

Hana's Naturals, a women-owned artisanal skincare business, recently experienced a transformative leap in productivity and product quality, thanks to a grant that enabled the purchase of a professional-grade bath bomb machine. Known for their handmade, all-natural products, Hana's Naturals was previously producing bath bombs entirely by hand—a time-consuming process that limited growth.

Before acquiring the machine, producing 50 bath bombs took over three hours on an average. The hand-pressed bombs often turned out uneven, crumbly, and required delicate handling and additional packaging to maintain their shape during transport and storage. The inconsistencies not only impacted product appearance but also added time and cost to packaging.

The grant-funded bath bomb machine changed everything overnight. Now, the same quantity of bath bombs can be produced in just one hour—an increase in efficiency that has significantly expanded production capacity. Each bath bomb comes out uniform, smooth, and professionally finished.

This upgrade has streamlined the entire production process and also brought down the production cost. Hana's Naturals can now meet higher demand with ease, confidently accept larger wholesale and retail orders, and consider expanding into new markets. The bath bomb machine not only improved the quality and appearance of the final product but also empowered the business to scale operations and envision a more sustainable, profitable future.

CAPDRIPS by Hamildullah Zaryab

MAPS announced a small business grant that would cover part of business-related costs. I applied and was approved quickly. I'm especially grateful to the entire MAPS team for their hard work and dedication to supporting our community.

I used the grant to purchase a DTF printer, which now allows me to print my brand logo, stickers, and fulfill custom orders from home. This has reduced my production costs by nearly 70%.



\$225k

**SBRL FUNDING SECURED
FOR 9 LOCAL BUSINESSES**



150

**VENDORS PARTICIPATED
IN OUR BUSINESS FAIRS**

Crafty Lilac Design by Sabina Makhdoom

"I am very grateful for the CRP grant awarded by MAPS SBRN using which I was able to purchase the xTool S1. This machine has allowed me to expand what I can create, making it easier for me to craft with wood, acrylic and stone in addition to many other materials. The engraving capability has enabled me to offer my customers a large variety of personalized gifts like this engraved slate coaster. I am excited about the possibilities now open to me."

3e Gear by Faizan Dhanakwala

Thanks to the grant, I was able to purchase a Sony A7 III, a high-quality tripod, and a lens cleaner, tools that have already made a big difference in my content creation process. Shooting in 4K has taken the visual quality of my work to the next level, especially as I prepare for my upcoming drop. The new tripod is a huge upgrade from my old one much more stable and reliable, which helps me shoot solo content with confidence. It really helps to get the actual fabric of the clothing and I am ever so grateful.



200+

**ENGAGED THROUGH
TARGETED SBRL
OUTREACH**



\$450k

**TOTAL FUNDING RAISED
FOR SBRN**

ATUIQE by Abubakr Abdulkadir

Thank you again for awarding us the MAPS grant. With the funds, we purchased a high-quality drone to support our event production services. This has already enhanced how we capture live footage and promotional content for festivals and community gatherings, including overhead crowd shots, dynamic videos, and behind-the-scenes storytelling.

Before the grant, our team was limited to ground-level shots or renting drone services, which added time and cost. Now, having our own equipment gives us full creative control, quicker turnaround, and a more professional final product.

We're grateful for this support and look forward to sharing future footage captured with the drone. Thank you for investing in small businesses like ours, it's making a real difference.

Seattle Services for the Blind by Muayad Aziz

A dedicated new laptop will significantly reduce downtime, streamline our workflow, and ensure that critical projects—such as Braille transcription, document accessibility formatting, and outreach coordination—are completed faster and with greater precision.

Cafe Airiam by Rakin Resmath

Grinder has manual adjustments, reducing waste and ensuring each shot meets a high standard. Its compact footprint fits perfectly in my limited setup space, while the quiet yet powerful motor helps maintain a calm and professional vibe, even during busy hours. With programmable recipes and fast grind times, it keeps the workflow smooth, whether I'm serving one customer or a long line. The build quality is robust enough to handle daily transport and setup, and the intuitive interface makes training staff quick and easy. Ultimately, the Grinder allows us to serve consistently excellent espresso wherever we go—reinforcing our commitment to quality, efficiency, and a premium coffee experience for every customer.

Transcend by Nazia Siddique

CRP grant from MAPS Redmond allowed us to take a critical first step toward building that infrastructure. We used the funds to purchase a Cricut AutoPress, Cricut Venture for precision cutting and upcycling projects, and sewing equipment. These investments gave us the ability to prototype faster, run small production runs locally, and train our seamstresses on advanced techniques.

Aayah Photography by Aayah Khalaf

Thanks to the generous grant, I was able to purchase a new professional lens that has already made a noticeable difference in my photography business. As a branding and product photographer, high-quality, true-to-life imagery is everything—and this lens has elevated the sharpness, depth, and overall quality of my work. It's allowed me to shoot more efficiently and produce stunning results straight out of camera, reducing editing time and helping me deliver faster to clients. I've already booked new clients who've noticed the upgrade in my portfolio, and I'm confident this investment will continue to open doors for higher-end opportunities. I'm so grateful for this support—it's made a real, immediate impact.

DID YOU KNOW?



\$250k

distributed directly to
small-business



100+

small-businesses
received technical aid



10,000

people reached
through outreach
programs



“Thanks to your support, we’ve been able to keep our business afloat. This loan has made a significant impact on our ability to meet the demands of our customers and stay competitive in the market.”

— *Abdirahman Mahdi, President off OneSource Business Center LLC*

IMPACT SUMMARY

CRP funding was instrumental in helping 20 small businesses in our network build long-term resiliency. By supporting the purchase of essential tools—ranging from POS systems and commercial kitchen equipment to laser cutters and accessibility technology—these businesses were able to streamline operations, expand their offerings, and better serve their communities. One of the most rewarding outcomes has been seeing entrepreneurs build capacity to scale, move from idea to execution faster, and grow in ways that were previously out of reach. This program didn’t just provide resources—it generated real, measurable impact for local businesses ready to take the next step.

BUSINESS FAIRS & ECOSYSTEM BUILDING

MAPS SBRN organized two major business fairs in Feb 2025, and March 2025. These events featured 100+ vendors, and hundreds of community members attended. These fairs served as economic accelerators and networking platforms for small businesses.

LOOKING AHEAD

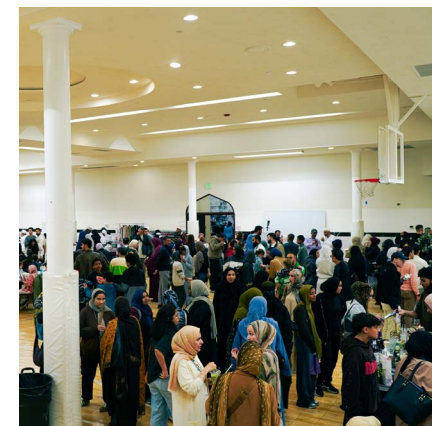
MAPS SBRN will continue to:

- Expand multilingual technical assistance
- Launch more topic-specific workshops
- Offer follow-up coaching for loan and capital recipients

Explore partnerships that provide deeper access to e-commerce tools and digital training.

CONCLUSION

FY25 was a year of meaningful growth and measurable impact for MAPS’ small business support work. As an SBRN partner serving King, Snohomish, and Pierce Counties, we supported 100+ entrepreneurs through one-on-one technical assistance, reached 10,000+ community members through outreach, and hosted two business fairs featuring 100+ vendors each. Through SBRN, SBRL, and CRP, we helped immigrant-, women-owned, and underrepresented businesses access training, visibility, and capital—delivering nearly a quarter million dollars directly to small businesses in FY25, while securing \$200K+ in grant funding to sustain the program into FY26 and FY27. We are excited to build on this momentum in FY26 and deepen our impact through 2027 and beyond.





“In a year marked by rising need and tightening resources, MAPS-MCRC chose compassion over retreat and service over hesitation. We stood with our community when it mattered most.”

2025

MAPS-MCRC Community Impact

<div>2500+ food boxes distributed during Ramadan</div> <div>5000+ hot meals served</div> <div>2000+ households Provided with food & gas cards</div> <div></div>	<div>500+ families provided with emergency rental and utility assistance</div> <div>60+ families saved from eviction</div> <div></div>	<div>26 women housed</div> <div>7 women exited program and transitioned to permanent housing</div> <div></div>
<div>100+ seniors (men & women) regularly attend in-person monthly programs provided for senior social connection</div> <div></div>	<div>100 + patients see</div> <div>50+ Volunteers including doctors, Medical Assistants, scribes, registration, etc,</div> <div>Planning in progress to scale to full time clinic</div> <div></div>	<div>120+ Families were provided furniture from the storage warehouse</div> <div></div>

MAPS-MCRC REPORT

OUR FOCUS

Our focus this year was to continue serving the needs of the most vulnerable in our community while scaling up 3 key program focus areas:

- Transitional housing for single women
- Golden Times program for seniors
- Community clinic

We are grateful for:

All of our staff, program leads, Donors, volunteers, partners, community members

MISSION

Our mission is:

The MAPS- Muslim Community Resource Center (MCRC) is dedicated to serving the less fortunate throughout the Pacific Northwest by providing compassionate, inclusive, and culturally-sensitive humanitarian support. Informed by a commitment to human dignity and community partnership, we deliver humanitarian services — including food, eviction prevention assistance, healthcare, housing assistance, and refugee support — without discrimination on the basis of race, religion, gender, age, or socioeconomic status.

Through collaboration with local nonprofits, public agencies, and volunteers, we strive to uplift individuals and families in need, strengthen community resilience, and embody a spirit of service that benefits all people.

OVERVIEW OF THE YEAR

In 2025 we experienced:

- Increased demand for food as EBT benefits were cut and thousands were impacted by fall out from the Federal government shut down
- 45% increase in clients coming to us with eviction notices as rents continued to increase and families faced headwinds of an economic slowdown

KEY HIGHLIGHTS

In 2025, we served nearly 2,000 households with food and gas cards. These households included low-income families, individuals, and single adults. Most of the households receiving this assistance were very low-income and facing food insecurity and impacted by the government shut down and the cut in SNAP/EBT benefits.

MAPS-MCRC clinic continued its monthly in-person clinic.



2,000
HOUSEHOLDS
RECEIVED FOOD &
GAS CARDS



100+
SENIORS TAKE PART IN
GOLDEN TIMES EVENTS



500+
HOUSEHOLDS
RECEIVED RENTAL AID



2,500+
FOOD BOXES
DISTRIBUTED IN
RAMADAN

Senior program 100+ seniors regularly participated at a time in Golden Times events & programs held at MAPS.

MAPS-MCRC scaled back its plans for expansion of the single women's transitional housing programs and paused some existing programs in 2025 due to new financial controls implemented in the 2nd half of the year due to new MAPS Board financial policies

PROGRAM BREAKDOWN

Food Programs

- Served nearly 2,000 households with food and gas cards;
- Provided 2500+ non-perishable food boxes during Ramadan in partnership with other organizations
- 5000+ Hot meals served

Community Clinic

- MAPS-MCRC clinic continued its monthly in-person clinic.
- Over 100 patients seen in 2025.
- Planning in progress on gradually scaling to a full-time clinic in the near future

Eviction Prevention

- Served 500+ households with rental assistance to help prevent eviction and homelessness

Golden Times Program for Seniors

- In person programs for senior men and women held at MAPS throughout the year
- 100+ seniors regularly participate in these monthly events



PROGRAM BREAKDOWN (CONT)

Transitional Housing for Single Women

- Number of single women housed: 17
- Number of single women who were able to exit the program and find permanent housing: 9

Furniture warehouse Program

- 120+ Families were provided furniture from the storage warehouse
- Over the past 11 years more than 1,500 families were helped by the amazing storage helpers.
- This program ended at the end of 2025 given that no new refugee families are coming in to our region now

CHALLENGES THIS YEAR

MAPS-MCRC scaled back its plans for expansion of the single women's transitional housing programs and paused some existing programs in 2025 due to new financial controls implemented in the 2nd half of the year due to new MAPS Board financial policies . We have 4 single women on the waiting list to be housed.



MAPS-READY REPORT



TRAINING



DRILLS



PROCESS

OVERVIEW OF THE YEAR

Over the past year, MAPS Ready focused on strengthening community safety, preparedness, and emergency response through training, coordination, and volunteer engagement. Three major initiatives marked our efforts and growth.

LOCKDOWN DRILL WITH MAPS BOY SCOUTS

In partnership with the Redmond Police Department and the MAPS Boy Scouts, MAPS Ready organized a comprehensive lockdown drill at the masjid. Participants were assigned to designated zones throughout the building and practiced lockdown procedures as the drill was initiated. This exercise helped attendees become familiar with different areas of the mosque, understand emergency protocols, and learn practical strategies for staying safe during critical situations. The drill emphasized preparedness, coordination, and calm response in the event of an emergency.

RAMADAN SAFETY VOLUNTEERS

During the month of Ramadan, MAPS Ready coordinated CPR-certified volunteers to be present throughout nightly programs. Volunteers signed up for scheduled shifts, ensuring consistent coverage across different nights. This initiative strengthened on-site emergency readiness during one of the busiest times of the year for the masjid. We also piloted the use of safety vests to help volunteers remain visible and easily identifiable, allowing community members to quickly locate assistance if needed.

EID SAFETY SUPPORT

To support the large crowds attending Eid prayers and celebrations, MAPS Ready mobilized CPR-certified volunteers along with community members who are medical and emergency services professionals. A dedicated safety and first aid station was set up, stocked with first aid kits and staffed by trained volunteers prepared to respond to medical or safety-related incidents. This effort helped ensure a safe, organized, and supportive environment for all attendees during Eid.





MAPS-NOW REPORT

PARK ADOPTION: PARK MAINTENANCE WORK PARTIES WITH KING COUNTY PARKS

MAPS-NOW continued its strong partnership with King County Parks in 2025, furthering our commitment to enhancing local green spaces. Our primary focus remained on Marymoor Park, given our adoption of its segments and its close proximity to our masjid. Throughout the year, we organized seasonal volunteer events: tree planting initiatives took place during late fall and winter, while park maintenance activities were held in spring and summer. Notably, in 2025, we collaborated with Medina Academy and MAPS Cub Scouts, resulting in the successful planting of hundreds of trees and shrubs. These efforts have contributed significantly to the beautification and sustainability of our parks, fostering community engagement and environmental stewardship.

ADOPT-A-HIGHWAY SPONSORSHIP

In 2025, MAPS-NOW continued its dedication to environmental stewardship through active participation in the Adopt-a-Highway program, a statewide initiative that encourages community involvement in keeping Washington's highways clean. Beginning in late 2024 and continuing into early 2025, we officially adopted a key highway segment: SR-520 Westbound, between mile markers 7.1 and 6.7 (I-405 North Exit & I-405 South Exit).

Beyond this, MAPS-NOW expanded its impact by continuing its four major highway locations across the Greater Seattle Area. These include:

SR-520 Westbound MM 7.1-6.7 (I-405 North Exit)

SR-520 Eastbound MM 9.0-9.4 (148th Ave NE North Exit)

I-5 Southbound MM 186-184

I-5 Northbound MM 184-186

I-405 Northbound/Southbound Interchange MM 23-24.5 (with two adoption signs)

In total, we have 6 official adoption signs installed at these sites. Throughout the year, MAPS-NOW maintained its sponsorship and regularly organized volunteer efforts to clean and care for these highway sections, promoting community pride and a cleaner environment for all.

ADOPT-A-ROAD VOLUNTEERING

In 2025, MAPS-NOW sustained its commitment to roadside cleanliness in the City of Kirkland by continuing to maintain the six road segments previously adopted. No new segments were added this year; instead, our focus remained on regular upkeep of the existing locations. Twelve signs (two for each segment) remained installed, serving as a visible reminder of our ongoing dedication to litter control and community improvement.

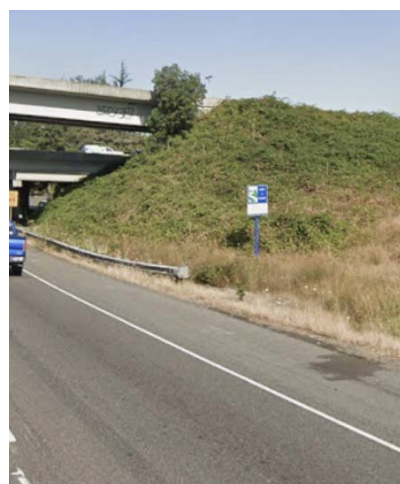
PARK ADOPTION: BENCH AND PICNIC TABLE DONATIONS

In 2025, MAPS-NOW continued its commitment to enhancing local parks through the maintenance of previously donated park benches and picnic tables. While there were no new donations made this year, our earlier contributions remain actively cared for in partnership with the City of Redmond and King County Parks. The following parks benefited from our ongoing support:

Marymoor Park	Perrigo Park
Grass Lawn Park	Farrell-McWhirter Park
Idylwood Park	Cottage Lake Park

This sustained stewardship helps ensure that community members continue to enjoy well-maintained amenities and welcoming park environments.

“MAPS-NOW continued its strong partnership with King County Parks in 2025, furthering our commitment to enhancing local green spaces.”





In 2025, MAPS Seattle advanced its vision to be the heart of Muslim life in Seattle, through intentional religious, educational, and social programming.



800
attendees at
Jummah



50-100
attendees at
daily salaah



30
students in
Quranic Arabic class

MAPS-SEATTLE REPORT

OVERVIEW

In 2025, MAPS Seattle advanced its vision to be the heart of Muslim life in Seattle through intentional religious, educational, and social programming.

First and foremost, regular attendance for prayers continues to grow. On average we see 50-80 people attend fajr daily, and maghrib/isha routinely gets 75-100 people. We average 800 attendees for Jummah across two Jummahs, with the first Jummah typically at full capacity including the upstairs overflow rooms. In Ramadan the musallah was at capacity most nights, and we frequently used the upstairs as overflow especially on weekends and the last ten nights. We held two community iftars per week, halaqahs on Saturday afternoons, and a community Eid brunch following three packed Eid prayers.

Our religious classes continue to see growth as well. Quran classes with Sh Abdismad (tajweed, hidfh, etc) are now serving 17 brothers and 4 sisters; Quranic Arabic began this fall, serving 30 students twice per week; Sunday school began this fall with 12 students enrolled; and we have three regular halaqas including Seerah with Imam Akram Baioumy, Tafseer with Br Alaa Badr (bi-weekly), and a Sisters halaqah. Additionally, Wasat rents the upstairs twice per week to hold an after-school children's program. We've continued to host guest speakers including: Sh Mikaeel Smith, Sh Mohammed Abu Taleb, Mufti Hussain Kamani, Sh Muntaser Zaman, Sh Hamzah Wald Maqbul, Imam Siraj Wahhaj, and Sh Abdul Wahhab Waheed. We've also held a series of non-halaqah events, including events on conflict resolution, Islamic finance, immigration rights (with CAIR), Muslims & AI, and a Hajj Nusuk info session.





MAPS-SNOHOMISH REPORT

INTRODUCTION

This year, our focus was:

Strengthening youth engagement, expanding educational programs, and building sustainable leadership to support a rapidly growing community.

We are grateful for:

Our donors, volunteers, parents, community partners, youth leaders, educators, and staff whose dedication made this year's progress possible.

MISSION

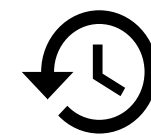
To serve and strengthen the MAPS Snohomish community through faith-based education, youth development, outreach, and community service.

OVERVIEW OF THE YEAR

In 2025, we experienced:

- Continued growth in youth participation across Fall, Winter, and Spring quarters
- Expansion of educational programming for preschool, after-school, youth, and adults
- Increased demand for religious guidance, counseling, and community engagement
- Strengthened partnerships with local organizations and city institutions

We also addressed key operational developments, including improved registration systems, payment integration, and enhanced parent communication structures.



80+
HOURS OF
COMMUNITY
SERVICE



150+
COMMUNITY
MEMBERS ACROSS
YOUTH & EDUCATION
PROGRAMS

KEY HIGHLIGHTS

- Served 150+ community members across youth and education programs
- Hosted 18 total youth events across three quarters
- Averaged 12 youth per event, with steady growth to 15 regular attendees
- Highest attended event: Youth Itikaf (25 participants)
- Contributed 80+ hours of community service, supporting high school graduation requirements
- Raised \$136,000 in December fundraising
- Established partnerships with the City of Marysville and Marysville Community Food Bank
- Successfully integrated online and kiosk registration payments



18 TOTAL YOUTH EVENTS
ACROSS THREE
QUARTERS

PROGRAM BREAKDOWN

MAPS Snohomish Youth Group

- Hosted educational, social, and service-based youth events across Fall, Winter, and Spring
- Number served: Approximately 15 regular youth participants
- Impact highlight: Increased sister participation to match brothers and strengthened parent engagement through a dedicated group chat

After-School Education Program (Ages 6-15)

- Delivered structured Islamic and academic enrichment programming
- Number served: 35 students (projected)
- Impact highlight: Strong positive feedback from families and consistent enrollment growth

MAPS-SNOHOMISH REPORT (CONT)



A special thank you to our major donors, partners, and volunteers who went above and beyond to make this possible. We are deeply grateful for the ongoing support of

Preschool Program (Ages 3-5)

- What we did: Provided early childhood education with low student-teacher ratios
- Number served: 8 students (5 paying, 3 waived)
- Impact highlight: Highly praised instruction and nurturing environment led by dedicated educators

Adult Education Programs (18+)

- What we did: Offered Quran and Islamic studies classes for brothers and sisters
- Number served: 11 projected students
- Impact highlight: Structured learning opportunities with strong interest and plans for expansion

Special Events

- Youth Itikaf (Attendance: 25)
- Community Halaqa & Potluck Nights (Monthly)
- Youth Service Activities & Workshops (Multiple events)

CHALLENGES THIS YEAR

We faced challenges such as:

- Managing increased demand with limited staffing capacity
- Balancing affordability with program sustainability
- Scheduling and space constraints as attendance grew
- Meeting expanding religious and educational needs with a part-time imam structure



Preschool Program (Ages 3-5)

- What we did: Provided early childhood education with low student-teacher ratios
- Number served: 8 students (5 paying, 3 waived)
- Impact highlight: Highly praised instruction and nurturing environment led by dedicated educators

Adult Education Programs (18+)

- What we did: Offered Quran and Islamic studies classes for brothers and sisters
- Number served: 11 projected students
- Impact highlight: Structured learning opportunities with strong interest and plans for expansion

Special Events

- Youth Itikaf (Attendance: 25)
- Community Halaqa & Potluck Nights (Monthly)
- Youth Service Activities & Workshops (Multiple events)

PRESCHOOL PROGRAM (AGES 3-5)

- What we did: Provided early childhood education with low student-teacher ratios
- Number served: 8 students (5 paying, 3 waived)
- Impact highlight: Highly praised instruction and nurturing environment led by dedicated educators

Adult Education Programs (18+)

- What we did: Offered Quran and Islamic studies classes for brothers and sisters
- Number served: 11 projected students
- Impact highlight: Structured learning opportunities with strong interest and plans for expansion

Special Events

- Youth Itikaf (Attendance: 25)
- Community Halaqa & Potluck Nights (Monthly)
- Youth Service Activities & Workshops (Multiple events)

CHALLENGES THIS YEAR

We faced challenges such as:

- Managing increased demand with limited staffing capacity
- Balancing affordability with program sustainability
- Scheduling and space constraints as attendance grew
- Meeting expanding religious and educational needs with a part-time imam structure

OUR TEAM



Comprised of seasoned leaders and visionaries, our Board of Directors drives the strategic direction and oversees the governance of the Muslim Association of Puget Sound



As our board has spent time reflecting on and planning for next year, we have come up with many plans that we are excited to share as we kick off our campaign for 2026 Inshallah.



MOHAMMAD VAKIL
President

Mohammad Vakil is currently the President at MAPS and has served in MAPS Board of Directors in multiple capacities since 2006. He is married to Nasreen, and they both have four children. Mohammad currently works as a Technical Program Manager for Facebook's AI & ML infrastructure team.



SYED HAMID AAMER
Vice President

Br. Syed is currently serving as a treasurer of MAPS. He also served 2 terms on the MAPS Board of Trustees. Prior to MAPS, Syed served in Medina Academy board as an Operations head for 7 years. His vision for MAPS is that he wants MAPS to be an organization where providing service to humanity at large irrespective of religion or social status is second nature. In his professional life, he is a Founder and CEO of a technology startup called Quantyzd



AAMER MOHAMMED
Religious Chair

Aamer Mohammed has served on both the Board of Directors and Board of Trustees of MAPS over several years. From 2017 to 2023, he held the position of Religious Affairs Secretary, and since February 2024, he has been an active member of the Board of Trustees. In his professional life, Aamer holds a bachelor's degree in computer science from BITS, Pilani, India, and a master's degree in computer science from the University of Minnesota, Minneapolis. Currently, he works as a Software Engineer at Microsoft.



AFNAN DALLASHEH
General Secretary

Afnan Dallasheh, a MAPS member for five years, is passionate about youth empowerment, women's initiatives, and sustainability. She has volunteered in MAPS events and Girl Scouts and advocates for Muslim students through PTSA organizations. Professionally, Afnan has experience as a Business Relationship Manager, Pharmacy Manager, and Science Teacher. She brings valuable organizational skills to support MAPS' growth and envisions sustainable, equitable programs that strengthen community bonds. Afnan holds a pharmacy degree from Jordan.



BILAL SYED
Treasurer

Bilal has been an active community member since moving to the Seattle area in 2013. He brings extensive finance and technology expertise with 15+ years of experience across Big Tech (Google, Microsoft and Amazon) and Big 4 public accounting (Deloitte and PwC). He joined the Board as Treasurer in May 2025.

He holds an MBA from UW Foster Business School and is currently an Inactive CPA. He previously held active CPA licenses in the states of WA and OR. He and his wife, Ra-beea, have two daughters, Nabihah and Noor Ayesha.



AHMED AYAD
Strategic Chair

Ahmed spent too much time being a student before moving to the Pacific Northwest in 2006 with his family, where he joined the first Jumaa prayer for the newly formed organization called MAPS. He served as the general secretary of the Board of Directors for many years, seeing it through moving into its current facility. He recently joined Board through nomination to fill an open vacancy (MAPS Bylaws, Section 9). Ahmed's hope is to enable the organization to expand once more into a form that will take our community into the next 30 years in shaa Allah.degree from Jordan.



HEND ALHINNAWI
Outreach & Advocacy

Henda Alhinnawi is a Syrian American who was raised in a vibrant Muslim community in Los Angeles and has been in Washington State for the past five years. She lives in Kirkland with her husband, Taha, and their two children. As the Women and Outreach Secretary at MAPS, she is looking forward to working with the community on issues that matter to them and promoting Muslim visibility in public spaces.



NISHAT AKHTER
Social Chair

Nishat Akhter, has been a part of the MAPS community since the last 17 years, and has been an active volunteer across multiple MAPS programs. Nishat has spent 21+ years in the tech industry, and she currently leads a Data Product and Engineering team within AWS. She received her B.S. in Computer Engineering from Clemson University in South Carolina. She is also a graduate of the Seattle based Leadership Tomorrow program, that focuses on community leadership and building a deeper understanding of our region's opportunities and challenges. She currently serves as a board member for Skillspire Foundation. She currently resides in Redmond with her husband and two kids.



ALEJANDRA LEVY
Community Engagement & New Muslim Care

Alejandra Levy serves the MAPS community through faith-centered leadership focused on unity, service, and belonging. As a board member, she champions inclusive engagement and a welcoming masjid. Former Chair of the Convert Committee, she supported nearly 100 new Muslims and later launched How to Ramadan, serving 45 participants in its first year. She now leads community engagement efforts to expand holistic care and deepen involvement across MAPS.

THE TEAM BEHIND THE TEAM

THANK-YOU TO OUR BOARD OF TRUSTEES, SCHOLARS & STAFF

MAPS extends heartfelt thanks to the Board of Trustees and staff for their diligent care of the congregation and facility, enabling impactful community outreach and education. May Allah generously reward your efforts and grant you the highest levels of Jannah.

BOARD OF TRUSTEES



HYDER ALI



DR. WAEL BAHAA EL-DIN



HAFSA AZAZ



RAFAAT RASHWAN



AZI COLLING



OUR RESPECTED SCHOLARS



IMAM MOHAMED JOBAN
MAPS Ambassador



SHAYKH ADAM JAMAL
MAPS Head Imam



SHAYKH AKRAM BAILOUMY
MAPS-Seattle Imam



SHAYKH ASLAM ACHA
Quran & Hifz Teacher



IMAM SHARIEF YUSUF
MAPS-Snohomish Imam

MAPS STAFF



MAHMOOD KHADEER
Chief Operating Officer (COO)



ABDOUSELAM IBRAHIM
Director of Operations



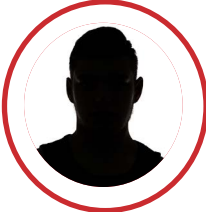
SULIEMAN ABDULKANI
Library & Office Assistant



MUSTAFA HAJI
MAPS-MCRC Case Manager



SARAA SYED
Marketing Director



ABDUL MATIN
Case Manager



GUL SIDDIQI
Community Services Director
(MCRC/SBRN)



NILOFER BANU
MAPS-Precious Hearts Manager



KAREEM ABU MAHMOUD
MAPS Housekeeping



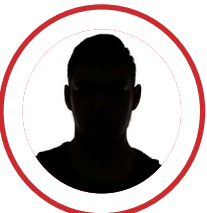
ABDU SALEH
MAPS Housekeeping



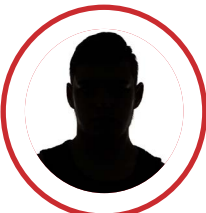
SAFIYA MOHAMUD
MAPS Housekeeping



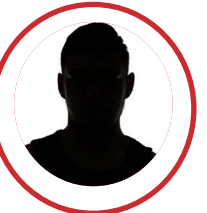
MOHAMMED N. HAJI
MAPS Housekeeping



IMAD ALSHIHABI
MAPS Security Manager



EMAD ALI
MAPS Security



KAMAL ATTWA
MAPS Security

ALSO THANKING

Ibrahim Omar - Security
Omar Helal - Security
Naazneen Ali - Graphic Designer
Aman Mohammed - Housekeeping
Mohamed Pirot - Housekeeping
Mallak Attwa - Event Coordinator
Shayma Hasan - Sunday School Manager
Abdulrahman Abdi - MAPS Seattle
Houskeeping Supervisor
Abdisamad Umar - MAPS Seattle Imam
Mahamadi Kabre - MAPS Seattle
Housekeeping
Safaa Aldib - Outreach coordinator
Sidaty Sidi Mohammed - Snohomish
Houskeeping

Thank you!

THE MOST BELOVED OF PLACES TO ALLAH
are the mosques.

[SAHI HADITH]



CONTACT US



7550 NE 67th Ct.
Redmond, WA 98052



Phone: (425) 861-9555



Web: www.mapsredmond.org
Email: info@mapsredmond.org